



Name _____ Class _____ Date _____

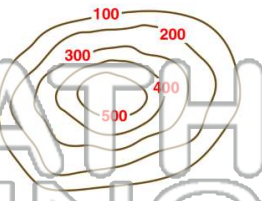
1 Every type of map has to have which of the following in order to be **valuable** and **useful**?

- A a legend
- B a date and a compass rose
- C a title and scale
- D all of the above



2 What would you call the **landform** indicated by the contour lines in this picture?

- A a mountain
- B a river valley
- C a hill
- D a crater



3 What would you call the **landform** indicated by the contour lines in this picture?

- A a mountain



4 What **feature** is represented in this topographic map?

- A a mountain

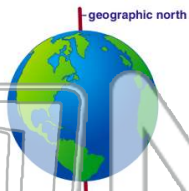


PREVIEW

Please [Sign In](#) or [Sign Up](#) to download the printable version of this worksheet

7

- A the polar declination
- B the prime meridian
- C the equator
- D true north



- A 0° N
- B 0° S
- C 90° N
- D 90° S



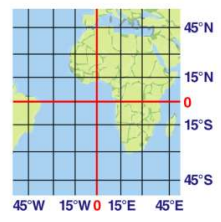
9 0° latitude is also known as

- A the prime meridian
- B the equator
- C the 180 degree meridian
- D true north



10 The location identified by the coordinates of **40° S, 45° W** is found in _____.

- A the Northern Hemisphere
- B the Southern Hemisphere
- C Europe
- D Africa





Name _____ Class _____ Date _____

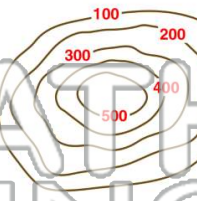
1 Every type of map has to have which of the following in order to be **valuable** and **useful**?

- A a legend
- B a date and a compass rose
- C a title and scale
- D all of the above



2 What would you call the **landform** indicated by the contour lines in this picture?

- A a mountain
- B a river valley
- C a hill
- D a crater



3 What would you call the **landform** indicated by the contour lines in this picture?

- A a mountain



4 What **feature** is represented in this topographic map?

- A a mountain



PREVIEW

Please [Sign In](#) or [Sign Up](#) to download the printable version of this worksheet

7

- A the polar declination
- B the prime meridian
- C the equator
- D true north



- A 0° N
- B 0° S
- C 90° N
- D 90° S



9 0° latitude is also known as

- A the prime meridian
- B the equator
- C the 180 degree meridian
- D true north



10 The location identified by the coordinates of **40° S, 45° W** is found in _____.

- A the Northern Hemisphere
- B the Southern Hemisphere
- C Europe
- D Africa

