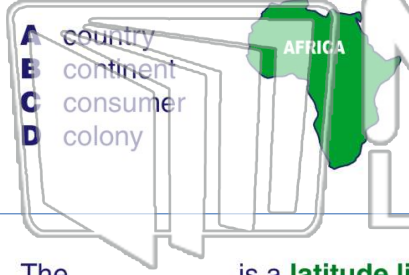




Name _____ Class _____ Date _____

1 A _____ is one of seven **large bodies of land** on earth.



- A country
- B continent
- C consumer
- D colony

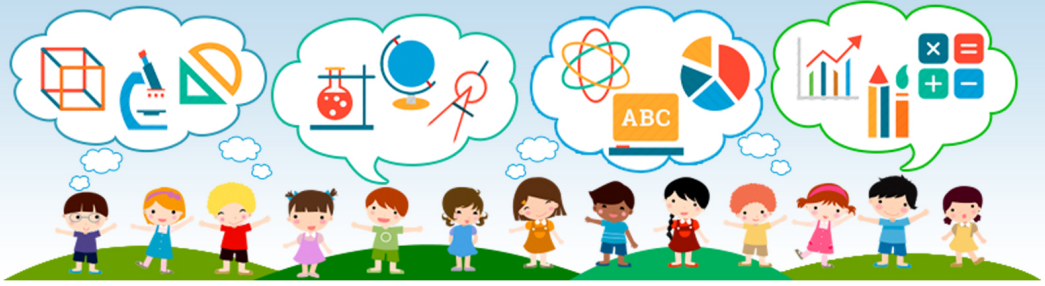
2 **Shapes on the surface** of the earth are known as _____.

- A landforms
- B boundaries
- C governments
- D ancestors

3 The _____ is a **latitude line** on a map or globe that divides the world in half

4 **North, south, east, and west** are the _____ directions.

5

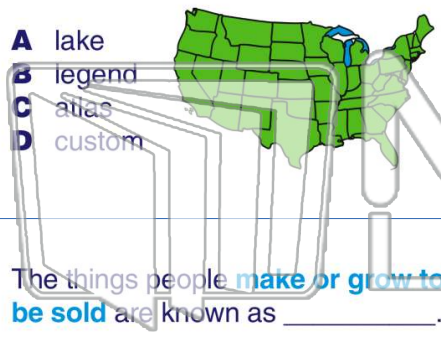


PREVIEW

Please [Sign In](#) or [Sign Up](#) to download the printable version of this worksheet

7

that **tells what the symbols mean**.



- A lake
- B legend
- C atlas
- D custom

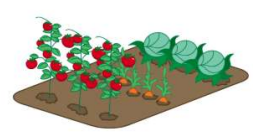
grow a crop are the _____.

- A ancestors
- B resources
- C producers
- D cardinals



9 The things people **make or grow to be sold** are known as _____.

- A goods
- B stores
- C schools
- D spaces



10 Policemen, firemen, and teachers **offer** _____ to our community.

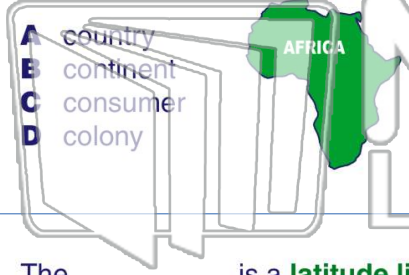
- A something
- B services
- C symbols
- D allowances





Name _____ Class _____ Date _____

1 A _____ is one of seven large bodies of land on earth.



- A country
- B continent
- C consumer
- D colony

2 Shapes on the surface of the earth are known as _____.

- A landforms
- B boundaries
- C governments
- D ancestors

3 The _____ is a latitude line on a map or globe that divides the world in half

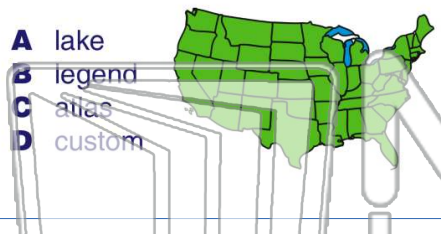
4 North, south, east, and west are the _____ directions.



PREVIEW

Please [Sign In](#) or [Sign Up](#) to download the printable version of this worksheet

7 that tells what the symbols mean.



- A lake
- B legend
- C atlas
- D custom

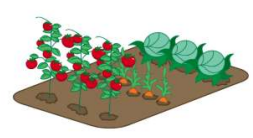
8 grow a crop are the _____.

- A ancestors
- B resources
- C producers
- D cardinals



9 The things people make or grow to be sold are known as _____.

- A goods
- B stores
- C schools
- D spaces



10 Policemen, firemen, and teachers offer _____ to our community.

- A something
- B services
- C symbols
- D allowances

