



Name \_\_\_\_\_ Class \_\_\_\_\_ Date \_\_\_\_\_

1 You can read about how people lived long ago in \_\_\_\_\_.

- A historical fiction
- B science fiction
- C fairy tales
- D fantasy



2 If you like to read stories about **superhuman characters and monsters**, you should look for \_\_\_\_\_.

- A fantasy
- B non-fiction
- C biography
- D nursery rhymes



3 A long story with **imaginary characters and events** is sometimes called a \_\_\_\_\_.

4 The story of **Paul Bunyan and Babe, the blue ox**, is an American \_\_\_\_\_.



5

## PREVIEW

Please [Sign In](#) or [Sign Up](#) to download the printable version of this worksheet

7 a slave on the **Underground Railroad** would be \_\_\_\_\_.

- A fantasy
- B science fiction
- C historical fiction
- D biblical



Aisling, a train picks children up in the night for a journey to the North Pole. This story is **non-fiction**.

- A true
- B false



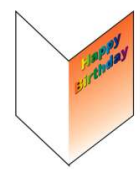
9 The **genre** that deals with **finding a solution to a strange happening or a crime** is \_\_\_\_\_.

- A history
- B science
- C legend
- D mystery



10 Writing letters, cards, and invitations is part of the genre we call **science fiction**.

- A true
- B false





Name \_\_\_\_\_ Class \_\_\_\_\_ Date \_\_\_\_\_

1 You can read about how people lived long ago in \_\_\_\_\_.

- A historical fiction
- B science fiction
- C fairy tales
- D fantasy



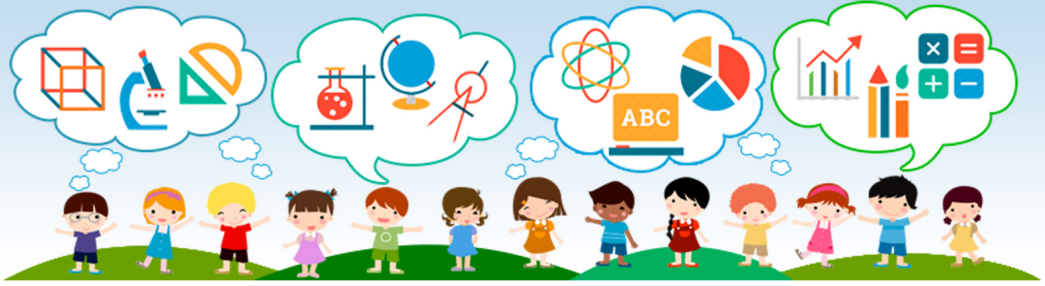
2 If you like to read stories about **superhuman characters and monsters**, you should look for \_\_\_\_\_.

- A fantasy
- B non-fiction
- C biography
- D nursery rhymes



3 A long story with **imaginary characters and events** is sometimes called a \_\_\_\_\_.

4 The story of **Paul Bunyan and Babe, the blue ox**, is an American \_\_\_\_\_.



**PREVIEW**

Please [Sign In](#) or [Sign Up](#) to download the printable version of this worksheet

7 a slave on the **Underground Railroad** would be \_\_\_\_\_.

- A fantasy
- B science fiction
- C historical fiction
- D biblical



8 In Ainsburg, a train picks children up in the night for a journey to the North Pole. This story is **non-fiction**.

- A true
- B false



9 The **genre** that deals with **finding a solution to a strange happening or a crime** is \_\_\_\_\_.

- A history
- B science
- C legend
- D mystery



10 Writing letters, cards, and invitations is part of the genre we call **science fiction**.

- A true
- B false

