



Name _____ Class _____ Date _____

1 Acid rain is pollution caused by cars and some power plants. The acid kills plants and animals. The damage can last for years. Industry must be made to minimize the pollution it creates.

This infers that acid rain is a harmful problem.

- A true
- B false

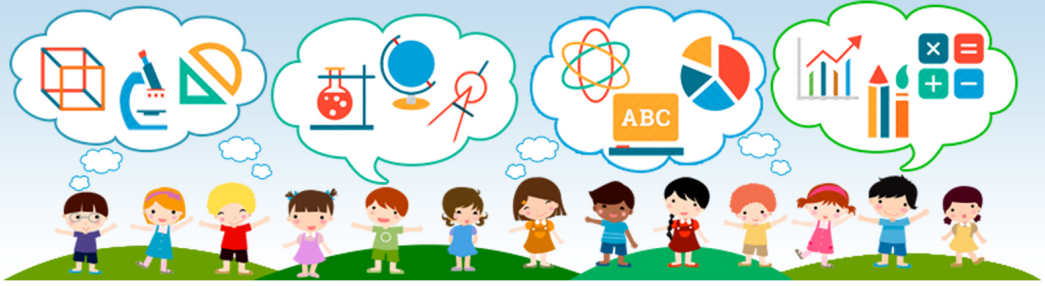
2 Olivia thought about the song "Winter Wonderland." She longed for the sparkling snow that covered the trees. She would have to wait until next winter.

The reader can infer that:

- A Olivia can sing "Winter Wonderland."
- B Olivia was not in a place that had snow.
- C Olivia liked to travel.
- D Olivia loved summer.

3 Peter found an adorable well-groomed poodle. Peter discovered he could obey commands. Peter wants to keep him, but his mother said that he should search

4 Molly was ready. She had rented two movies. Her mom had ordered pizza. Molly had gathered extra quilts, and the air mattresses. Molly wanted everyone to stay



5

PREVIEW

Please [Sign In](#) or [Sign Up](#) to download the printable version of this worksheet

7 ...reputation, money, and having a positive influence on her class, the reader **cannot infer** that the students like her.

- A true
- B false

the music. When he wasn't at school or playing sports, he had on his earphones, listening to his favorite bands.

The reader can infer that:

- A Ben turned on the car radio.
- B Ben listened to his favorite bands.
- C Ben wanted to be a musician.
- D Ben liked to listen to music.

9 It took Shirley a long time to warm up to Jody. At first Shirley thought she was bossy. But she soon discovered they had a lot in common. The two eventually became inseparable.

The reader is able to infer that:

- A Shirley always liked Jody.
- B Shirley never liked Jody.
- C Although Shirley did not think highly of Jody at first, they became good friends.
- D Jody was very quiet and shy.

10 By relying on the reader to make inferences, the author does not have to explain or describe **everything** going on in the story.

- A true
- B false



Name _____ Class _____ Date _____

1 Acid rain is pollution caused by cars and some power plants. The acid kills plants and animals. The damage can last for years. Industry must be made to minimize the pollution it creates.

This infers that acid rain is a harmful problem.

- A true
- B false

2 Olivia thought about the song "Winter Wonderland." She longed for the sparkling snow that covered the trees. She would have to wait until next winter.

The reader can infer that:

- A Olivia can sing "Winter Wonderland."
- B Olivia was not in a place that had snow.
- C Olivia liked to travel.
- D Olivia loved summer.

3 Peter found an adorable well-groomed poodle. Peter discovered he could obey commands. Peter wants to keep him, but his mother said that he should search

4 Molly was ready. She had rented two movies. Her mom had ordered pizza. Molly had gathered extra quilts, and the air mattresses. Molly wanted everyone to stay



5

PREVIEW

Please [Sign In](#) or [Sign Up](#) to download the printable version of this worksheet

7 ...napping, mending, and making a positive influence on her class, the reader **cannot infer** that the students like her.

- A true
- B false

the music. When he wasn't at school or playing sports, he had on his earphones, listening to his favorite bands.

The reader can infer that:

- A Ben turned on the car radio.
- B Ben listened to his favorite bands.
- C Ben wanted to be a musician.
- D Ben liked to listen to music.

9 It took Shirley a long time to warm up to Jody. At first Shirley thought she was bossy. But she soon discovered they had a lot in common. The two eventually became inseparable.

The reader is able to infer that:

- A Shirley always liked Jody.
- B Shirley never liked Jody.
- C Although Shirley did not think highly of Jody at first, they became good friends.
- D Jody was very quiet and shy.

10 By relying on the reader to make inferences, the author does not have to explain or describe **everything** going on in the story.

- A true
- B false