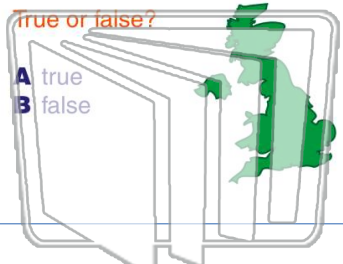




Name \_\_\_\_\_ Class \_\_\_\_\_ Date \_\_\_\_\_

1 Early English words came from **Anglo-Saxon** words.



2 Which English word came from the Anglo-Saxon word **thynne**?

- A think
- B thin
- C thick
- D thank

# NEW PATH LEARNING

3 Which English word came from the Anglo-Saxon word **seofon**?



4 The French, Italian, Spanish, and Portuguese languages are based on the **Latin** language, which was spoken by

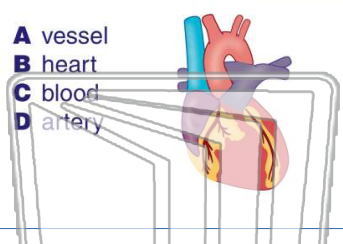


5

## PREVIEW

Please [Sign In](#) or [Sign Up](#) to download the printable version of this worksheet

7 The word **cardiac** that means \_\_\_\_\_.



8 The word **cycle** that means \_\_\_\_\_.

- A triangle
- B square
- C line
- D circle



9 The word **hydrant** came from the Greek root **hydr** that means \_\_\_\_\_.

- A rain
- B water
- C wind
- D dry



10 The word **mechanic** came from the Greek root **mechan** that means \_\_\_\_\_.

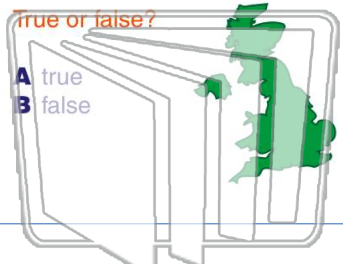
- A malt
- B music
- C machine
- D mast





Name \_\_\_\_\_ Class \_\_\_\_\_ Date \_\_\_\_\_

1 Early English words came from **Anglo-Saxon** words.



2 Which English word came from the Anglo-Saxon word **thynne**?

- A think
- B thin
- C thick
- D thank

3 Which English word came from the Anglo-Saxon word **seofon**?



4 The French, Italian, Spanish, and Portuguese languages are based on the **Latin** language, which was spoken by

5



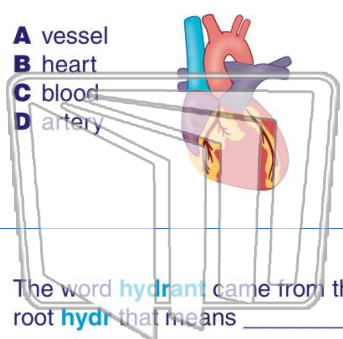
## PREVIEW

Please [Sign In](#) or [Sign Up](#) to download the printable version of this worksheet

7

root **card** that means \_\_\_\_\_.

- A vessel
- B heart
- C blood
- D artery



root **eye** that means \_\_\_\_\_.

- A triangle
- B square
- C line
- D circle



9 The word **hydrant** came from the Greek root **hydr** that means \_\_\_\_\_.

- A rain
- B water
- C wind
- D dry



10 The word **mechanic** came from the Greek root **mechan** that means \_\_\_\_\_.

- A malt
- B music
- C machine
- D mast

