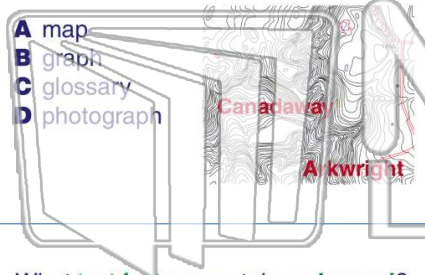




Name _____ Class _____ Date _____

1 What text feature presents information created by a **cartographer**?



- A map
- B graph
- C glossary
- D photograph

2 The words that **label** photographs are called _____.



- A phrases
- B paragraphs
- C captions
- D capitals

3 What **text feature** contains a **legend**?



- A map

4 Publishers may use **sideways print** known as _____ to **emphasize** a key word or phrase.

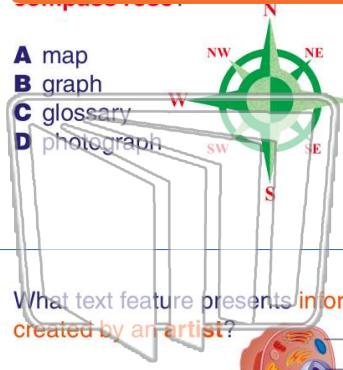


5

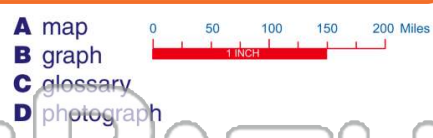
PREVIEW

Please [Sign In](#) or [Sign Up](#) to download the printable version of this worksheet

7



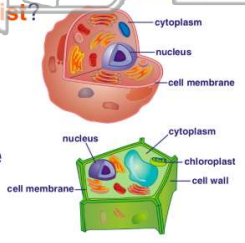
- A map
- B graph
- C glossary
- D photograph



- A map
- B graph
- C glossary
- D photograph

9 What text feature presents **information** created by an **artist**?

- A chart
- B illustration
- C glossary
- D copyright page



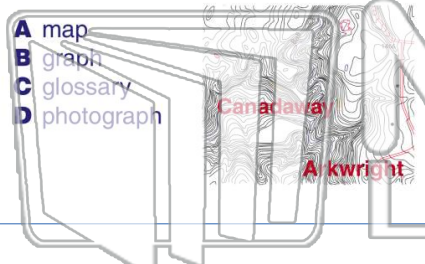
10 An effective reader uses the **text features** to _____ the textbook before beginning to read.

- A pretest
- B prefix
- C preview
- D preserve



Name _____ Class _____ Date _____

1 What text feature presents information created by a **cartographer**?



- A map
- B graph
- C glossary
- D photograph

2 The words that **label** photographs are called _____.



- A phrases
- B paragraphs
- C captions
- D capitals

3 What **text feature** contains a **legend**?



- A map

4 Publishers may use **sideways print** known as _____ to **emphasize** a key word or phrase.

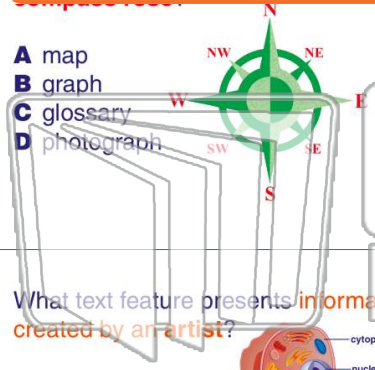


5

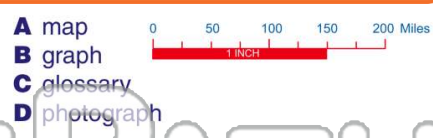
PREVIEW

Please [Sign In](#) or [Sign Up](#) to download the printable version of this worksheet

7



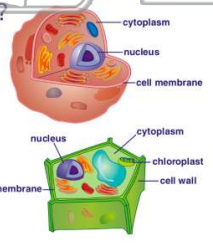
- A map
- B graph
- C glossary
- D photograph



- A map
- B graph
- C glossary
- D photograph

9 What text feature presents **information** created by an **artist**?

- A chart
- B illustration
- C glossary
- D copyright page



10 An effective reader uses the **text features** to _____ the textbook before beginning to read.

- A pretest
- B prefix
- C preview
- D preserve