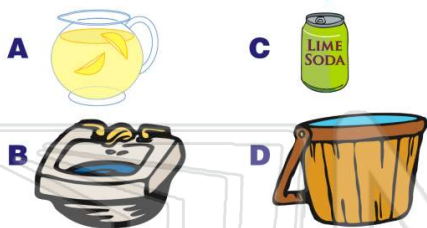




Name \_\_\_\_\_ Class \_\_\_\_\_ Date \_\_\_\_\_

1 Which holds **less than 1 quart**?



2 This **pitcher** holds \_\_\_\_\_  
**1 pint.**

- A more than  
B less than



3 This **sink** holds \_\_\_\_\_  
**1 cup.**

- A more than



4 This **jug** holds \_\_\_\_\_  
**1 liter.**

- A more than



5



## PREVIEW

Please [Sign In](#) or [Sign Up](#) to download the printable version of this worksheet

7

- B less than

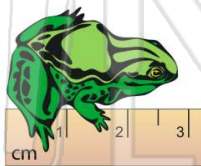


- A 1 centimeter  
B 2 centimeters  
C 3 centimeters  
D 4 centimeters

1cm 2cm 3cm 4cm

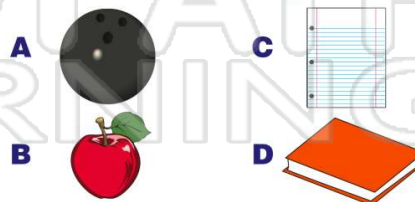
9

- A 3 centimeters  
B 1 centimeter  
C 2 centimeters  
D 4 centimeters



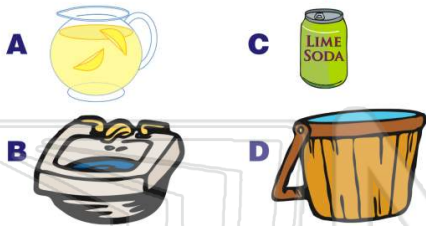
10

Which weighs about **1 gram**?





Name \_\_\_\_\_ Class \_\_\_\_\_ Date \_\_\_\_\_

1 Which holds **less than 1 quart**?

(C)

2 This **pitcher** holds \_\_\_\_\_  
**1 pint**.

- A more than  
B less than



(A)

3 This **sink** holds \_\_\_\_\_  
**1 cup**.

- A more than



(A)

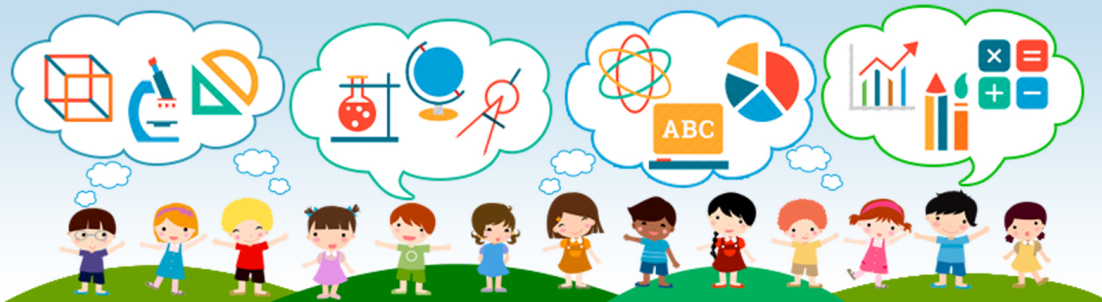
4 This **jug** holds \_\_\_\_\_  
**1 liter**.

- A more than



(A)

5



(A)

## PREVIEW

Please [Sign In](#) or [Sign Up](#) to download  
the printable version of this worksheet

7

- B less than



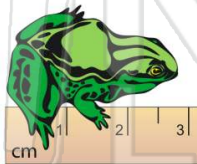
- A 1 centimeter  
B 2 centimeters  
C 3 centimeters  
D 4 centimeters

1cm 2cm 3cm 4cm

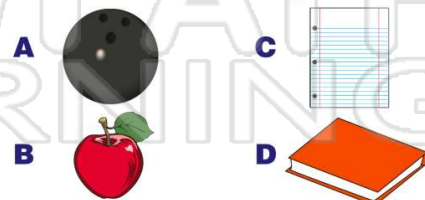
(B)

9

- A 3 centimeters  
B 1 centimeter  
C 2 centimeters  
D 4 centimeters



(A)

10 Which weighs about **1 gram**?

(C)