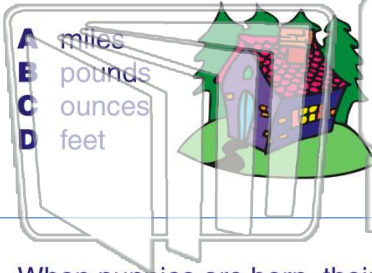




Name _____ Class _____ Date _____

1 The **distance** from our house to our garage is 10 _____.



- A miles
- B pounds
- C ounces
- D feet

2 What is the best form of measurement to find the **length** of a car?



- A feet
- B miles
- C inches
- D yards

3 When puppies are born, their **weights** are measured in _____.

4 When making cookies, you need only 2 _____ of flour.



PREVIEW

Please [Sign In](#) or [Sign Up](#) to download the printable version of this worksheet

7 _____ tall.

- A inches
- B yards
- C feet
- D miles

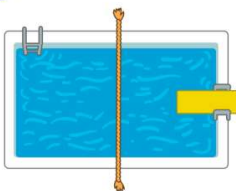


- A ounces
- B pounds
- C cups
- D quarts



9 The school's swimming pool is 25 _____ long.

- A inches
- B yards
- C miles
- D pounds



10 The **distance** between Bismarck, North Dakota and Pierre, South Dakota is about 286 _____.

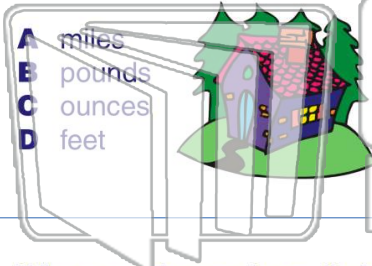
- A inches
- B yards
- C pounds
- D miles



Determine Appropriate Standard of Units

Name _____ Class _____ Date _____

1 The **distance** from our house to our garage is 10 _____.



- A miles
- B pounds
- C ounces
- D feet

2 What is the best form of measurement to find the **length** of a car?



- A feet
- B miles
- C inches
- D yards

3 When puppies are born, their **weights** are measured in _____.

4 When making cookies, you need only 2 _____ of flour.

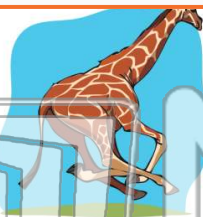


PREVIEW

Please [Sign In](#) or [Sign Up](#) to download the printable version of this worksheet

7 _____ tall.

- A inches
- B yards
- C feet
- D miles

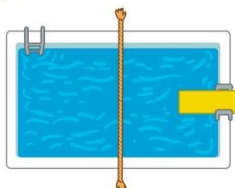


- A ounces
- B pounds
- C cups
- D quarts



9 The school's swimming pool is 25 _____ long.

- A inches
- B yards
- C miles
- D pounds



10 The **distance** between Bismarck, North Dakota and Pierre, South Dakota is about 286 _____.

- A inches
- B yards
- C pounds
- D miles