



The Science of Physics

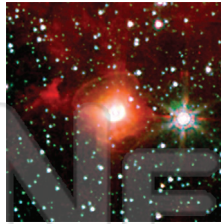
H.S. Phys

Name _____ Class _____ Date _____

1 The **total effect** of all the **processes** that occur in the universe is an **increase** in _____.

Circle the answer.

- entropy temperature
- order energy



6 The worker's **pull on the handle** of the cart can best be described as a **force** having _____.

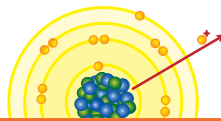
- a. direction, only
- b. magnitude, only
- c. both magnitude and direction



2 Which **device** can be used to **detect subatomic particles** that **exit nuclei**?

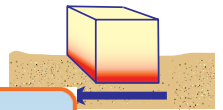
Circle the answer letter.

- a. Van de Graaff generator



7 The **work** done in **moving a block** across a rough surface and the **heat energy** gained by the block can **both** be measured in _____.

- watts degrees

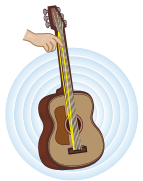


3
v
a
t
a
k
c
4
A
O
a



PREVIEW

Please [Sign In](#) or [Sign Up](#) to download the printable version of this worksheet



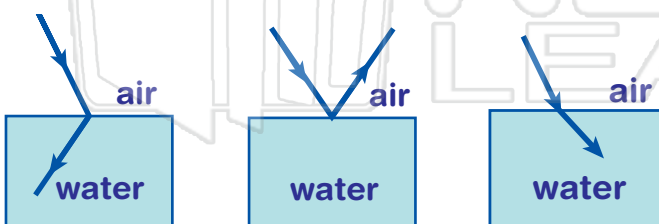
- b. decreases
- c. remains the same



- a. It decreases, then increases.
- b. It remains the same.
- c. It decreases, then remains the same.

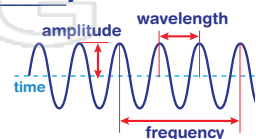


5 Which ray diagram best **represents** the phenomenon of **refraction**? Circle it.



10 The **energy of a water wave** is most closely related to its _____.

- frequency wavelength
- period amplitude



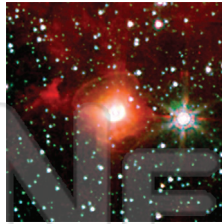


Name _____ Class _____ Date _____

1 The **total effect** of all the **processes** that occur in the universe is an **increase** in _____.

Circle the answer.

- entropy
- temperature
- order
- energy



6 The worker's **pull on the handle** of the cart can best be described as a **force** having _____.

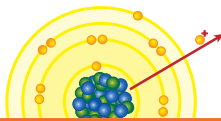
- a. direction, only
- b. magnitude, only
- c. both magnitude and direction



2 Which **device** can be used to **detect subatomic particles** that **exit nuclei**?

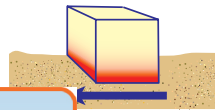
Circle the answer letter.

- a. Van de Graaff generator



7 The **work** done in **moving a block** across a rough surface and the **heat energy** gained by the block can **both** be measured in _____.

- watts
- degrees

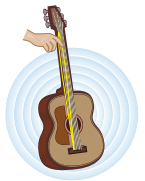


3
v
a
t
a
b
c



PREVIEW

Please [Sign In](#) or [Sign Up](#) to download the printable version of this worksheet



4
A
o
a

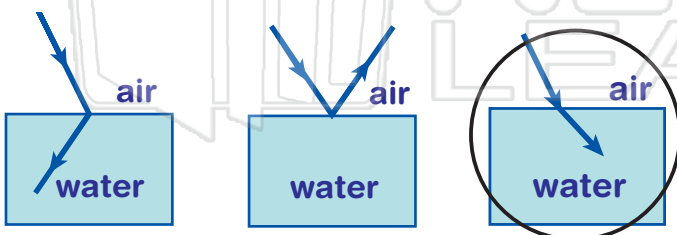
- b. decreases
- c. remains the same



- a. It decreases, then increases.
- b. It remains the same.
- c. It decreases, then remains the same.



5 Which ray diagram best **represents** the phenomenon of **refraction**? Circle it.



10 The **energy of a water wave** is most closely related to its _____.

- frequency
- wavelength
- period
- amplitude

