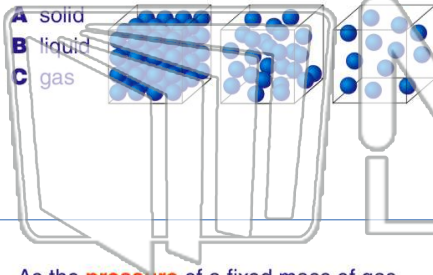




Name _____ Class _____ Date _____

1 Which phase has the **highest specific heat**?



2 In an **ideal gas**, **entropy** is a measure of the

- A volume of the molecules
- B mass of the molecules
- C forces of attraction between the molecules
- D disorder of the molecules

3 As the **pressure** of a fixed mass of gas is **increased** at constant temperature, the **density** of that gas

4 After a hot object is placed in an insulated container with a cold object, the hot object changes temperature and the cold object changes phase. **The total amount of**



PREVIEW

Please [Sign In](#) or [Sign Up](#) to download the printable version of this worksheet

7 _____ have a

- A higher average internal potential energy
- B higher average internal kinetic energy
- C greater mass
- D greater specific heat

20°C, what will be the **final temperature** of the liquid?

- A 20°C
- B 22°C
- C 40°C
- D 60°C



9 Equal masses of **copper**, **iron**, **lead**, and **silver** are heated from 20°C to 100°C. Which substance absorbs the **least** amount of heat?

- A lead
- B iron
- C copper
- D silver

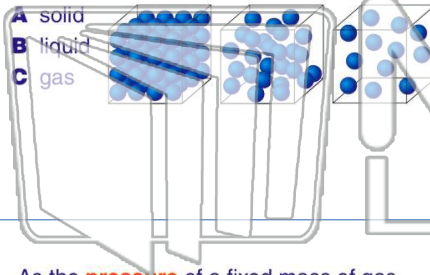
10 **Block A**, at **100°C**, and **block B**, at **50°C**, are brought together in a well-insulated container. **The internal energy of block A will**

- A decrease and the internal energy of block B will decrease
- B decrease and the internal energy of block B will increase
- C increase and the internal energy of block B will decrease
- D increase and the internal energy of block B will increase



Name _____ Class _____ Date _____

1 Which phase has the **highest specific heat**?



2 In an **ideal gas**, **entropy** is a measure of the

- A volume of the molecules
- B mass of the molecules
- C forces of attraction between the molecules
- D disorder of the molecules

3 As the **pressure** of a fixed mass of gas is **increased** at constant temperature, the **density** of that gas

4 After a hot object is placed in an insulated container with a cold object, the hot object changes temperature and the cold object changes phase. **The total amount of**



PREVIEW

Please [Sign In](#) or [Sign Up](#) to download the printable version of this worksheet

7 _____ have a

- A higher average internal potential energy
- B higher average internal kinetic energy
- C greater mass
- D greater specific heat

20°C, what will be the **final temperature** of the liquid?

- A 20°C
- B 22°C
- C 40°C
- D 60°C



9 Equal masses of **copper**, **iron**, **lead**, and **silver** are heated from 20°C to 100°C. Which substance absorbs the **least** amount of heat?

- A lead
- B iron
- C copper
- D silver

10 **Block A**, at **100°C**, and **block B**, at **50°C**, are brought together in a well-insulated container. **The internal energy of block A** will

- A decrease and the internal energy of block B will decrease
- B decrease and the internal energy of block B will increase
- C increase and the internal energy of block B will decrease
- D increase and the internal energy of block B will increase