



Name \_\_\_\_\_ Class \_\_\_\_\_ Date \_\_\_\_\_

1 What part of a flower looks like **small leaves surrounding the bud of a flower** and protects a developing flower before it blooms?

- A filaments
- B stigmas
- C sepals
- D petals



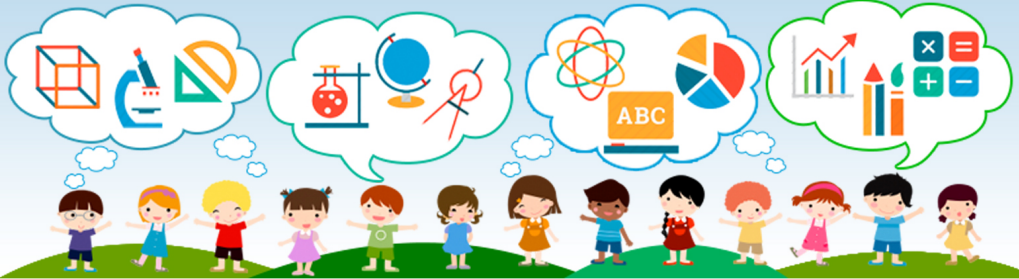
2 What part of the plant **attracts insects** to the flower?

- A the stem
- B the flower petals
- C the roots
- D the leaves



3 The \_\_\_\_\_ of a flower is made up of two main parts: the **anther** and the **filament**.

4 What is the **very thin structure** that holds up the **anther**?



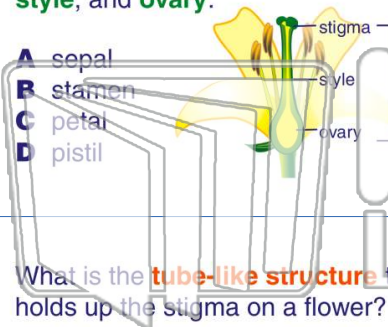
5

**PREVIEW**

Please [Sign In](#) or [Sign Up](#) to download the printable version of this worksheet

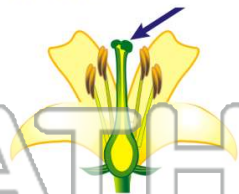
7 up of three main parts: the **stigma**, **style**, and **ovary**.

- A sepal
- B stamen
- C petal
- D pistil



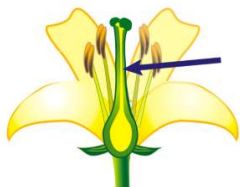
8 round on top of the pistil:

- A style
- B stigma
- C anther
- D filament



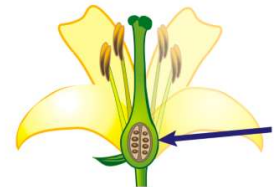
9 What is the **tube-like structure** that holds up the stigma on a flower?

- A style
- B anther
- C stamen
- D filament



10 The \_\_\_\_\_ of a flower **contains seeds and turns into fruit**.

- A ovary
- B filament
- C style
- D anther

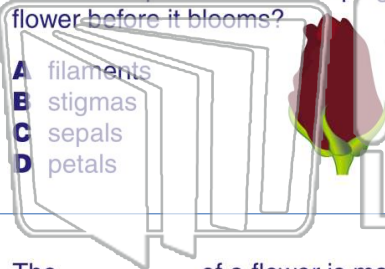




Name \_\_\_\_\_ Class \_\_\_\_\_ Date \_\_\_\_\_

1 What part of a flower looks like **small leaves surrounding the bud of a flower** and protects a developing flower before it blooms?

- A filaments
- B stigmas
- C sepals
- D petals



2 What part of the plant **attracts insects** to the flower?

- A the stem
- B the flower petals
- C the roots
- D the leaves



3 The \_\_\_\_\_ of a flower is made up of two main parts: the **anther** and the **filament**.

4 What is the **very thin structure** that holds up the **anther**?



5

**PREVIEW**

Please [Sign In](#) or [Sign Up](#) to download the printable version of this worksheet

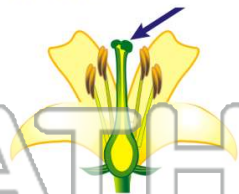
7 up of three main parts: the **stigma**, **style**, and **ovary**.

- A sepal
- B stamen
- C petal
- D pistil



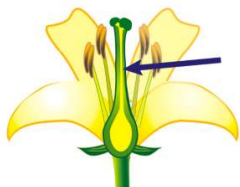
8 round on top of the pistil:

- A style
- B stigma
- C anther
- D filament



9 What is the **tube-like structure** that holds up the stigma on a flower?

- A style
- B anther
- C stamen
- D filament



10 The \_\_\_\_\_ of a flower **contains seeds and turns into fruit**.

- A ovary
- B filament
- C style
- D anther

