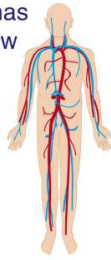




Name _____ Class _____ Date _____

1

Each cell in the human body has a **job** to do. Approximately, how **many cells** make up the average adult human body?



- A hundreds of cells
- B millions of cells
- C billions of cells
- D trillions of cells

2

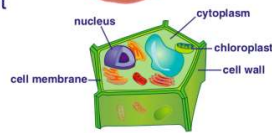
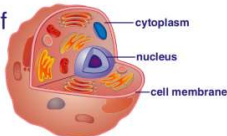
Animal and plant cells **both** have a **nucleus** and **cell membrane**. Which of the following supports this statement?

- A Animal and plant cells have large parts.
- B Animal and plant cells have similar parts.
- C Animal and plant cells have different parts.
- D Animal and plant cells have small parts.



3

_____ is a part of a **plant cell** but **not** of an **animal cell**.



- A A chloroplast
- B The cell membrane
- C A nucleus
- D Cytoplasm

4

Chloroplasts, found only in **plant** cells, catch the sun's energy for the plant. Why is it important for a plant to capture the **sun's energy**?

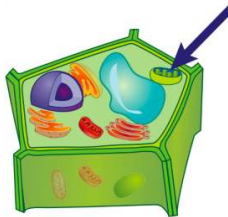
- A to grow more roots
- B to make its own food
- C to reproduce
- D to get water



5

The arrow is pointing to the _____ of the **plant cell**.

- A cell membrane
- B nucleus
- C cytoplasm
- D chloroplast



6

Why do animal cells **not** have **chloroplasts**?

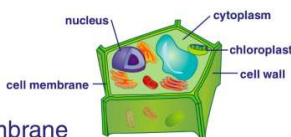
- A Animals do not make their own food.
- B Animals are too fast.
- C Animals are too big.
- D Animals do not need food.



7

Plant cells have _____, which animal cells do **not** have.

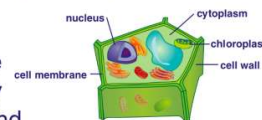
- A cytoplasm
- B a nucleus
- C a cell wall
- D a cell membrane



8

What is the main job of a plant's **cell wall**?

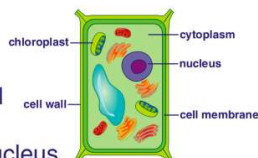
- A to gather the sun's energy
- B to support and protect the cell
- C to collect food for the cell
- D to help the cell grow larger



9

A plant's **cell wall** is located _____.

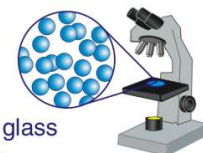
- A outside cell membrane
- B inside the cell membrane
- C next to the nucleus
- D inside the chloroplast



10

A **microorganism** is an organism that is **too small** to see with our eyes alone. How are scientists able **view** a microorganism?

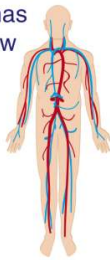
- A with a telescope
- B with binoculars
- C with a magnifying glass
- D with a microscope





Name _____ Class _____ Date _____

1 Each cell in the human body has a **job** to do. Approximately, how **many cells** make up the average adult human body?




A hundreds of cells
B millions of cells
C billions of cells
D trillions of cells

(D)

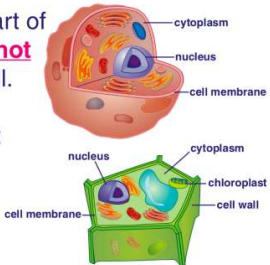
2 Animal and plant cells **both** have a **nucleus** and **cell membrane**. Which of the following supports this statement?

A Animal and plant cells have large parts.
B Animal and plant cells have similar parts.
C Animal and plant cells have different parts.
D Animal and plant cells have small parts.



(B)

3 _____ is a part of a **plant cell** but **not** of an **animal cell**.




A A chloroplast
B The cell membrane
C A nucleus
D Cytoplasm

(A)

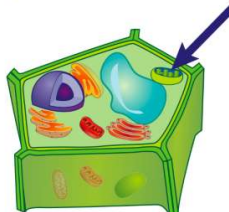
4 **Chloroplasts**, found only in **plant** cells, catch the sun's energy for the plant. Why is it important for a plant to capture the **sun's energy**?

A to grow more roots
B to make its own food
C to reproduce
D to get water



(B)

5 The arrow is pointing to the _____ of the **plant cell**.

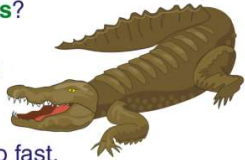


A cell membrane
B nucleus
C cytoplasm
D chloroplast

(D)

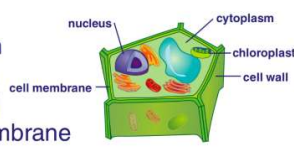
6 Why do animal cells **not** have **chloroplasts**?

A Animals do not make their own food.
B Animals are too fast.
C Animals are too big.
D Animals do not need food.



(A)

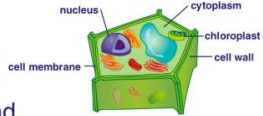
7 **Plant cells** have _____, which animal cells do **not** have.



A cytoplasm
B a nucleus
C a cell wall
D a cell membrane

(C)

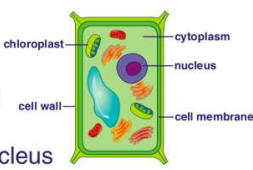
8 What is the main job of a plant's **cell wall**?



A to gather the sun's energy
B to support and protect the cell
C to collect food for the cell
D to help the cell grow larger

(B)

9 A plant's **cell wall** is located _____.

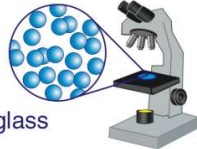


A outside cell membrane
B inside the cell membrane
C next to the nucleus
D inside the chloroplast

(A)

10 A **microorganism** is an organism that is **too small** to see with our eyes alone. How are scientists able **view** a microorganism?

A with a telescope
B with binoculars
C with a magnifying glass
D with a microscope



(D)