



Name _____ Class _____ Date _____

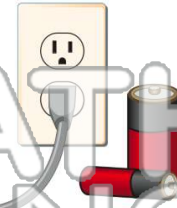
1 In a **parallel circuit**, if one bulb goes out, what happens to the other bulb?

- A the other bulb will go out
- B the other bulb will shatter
- C the other bulb will stay lit
- D the other bulb would become dimmer



2 What are the **two main types of current**?

- A CC and DD
- B AC and DC
- C AD and CD
- D AA and CC



3 An electric current that **reverses its direction at regular intervals** is called **AC**, or _____.

4 Electric current **flowing in one direction** is called **DC**, or _____.



5

PREVIEW

Please [Sign In](#) or [Sign Up](#) to download the printable version of this worksheet

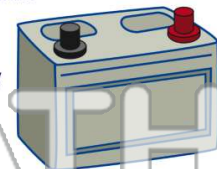
7 A battery's contents are _____.

- A its contents are a powder
- B its contents can be spilled
- C its contents are frozen
- D its contents cannot be spilled



8 _____ can be spilled, like the batteries used in a car.

- A big cell battery
- B small cell battery
- C dry cell battery
- D wet cell battery

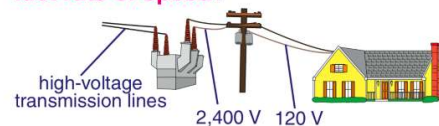


9 A _____ is a **safety device** that has a metal wire which melts and **stops the electrical current from flowing** through the circuit when the current becomes too strong.

- A switch
- B fuse
- C wire
- D circuit



10 What device allows electricity to be **transmitted** over long distances at a **fast rate of speed**?



- A fuse
- B circuit
- C transformer
- D outlet



Name _____ Class _____ Date _____

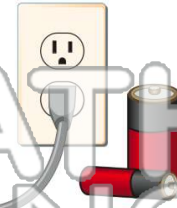
1 In a **parallel circuit**, if one bulb goes out, what happens to the other bulb?

- A the other bulb will go out
- B the other bulb will shatter
- C the other bulb will stay lit
- D the other bulb would become dimmer



2 What are the **two main types of current**?

- A CC and DD
- B AC and DC
- C AD and CD
- D AA and CC



3 An electric current that **reverses its direction at regular intervals** is called **AC**, or _____.

4 Electric current **flowing in one direction** is called **DC**, or _____.



PREVIEW

Please [Sign In](#) or [Sign Up](#) to download the printable version of this worksheet

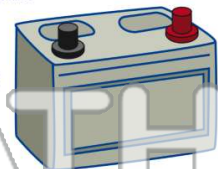
7 A **dry cell battery** has contents that _____.

- A its contents are a powder
- B its contents can be spilled
- C its contents are frozen
- D its contents cannot be spilled



8 _____ contents **can be spilled**, like the batteries used in a car.

- A big cell battery
- B small cell battery
- C dry cell battery
- D wet cell battery



9 A _____ is a **safety device** that has a metal wire which melts and **stops the electrical current from flowing** through the circuit when the current becomes too strong.

- A switch
- B fuse
- C wire
- D circuit



10 What device allows electricity to be **transmitted** over long distances at a **fast rate of speed**?

- A fuse
- B circuit
- C transformer
- D outlet

