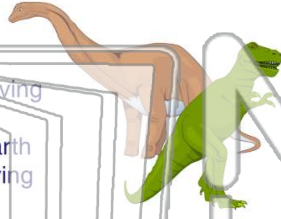




Name _____ Class _____ Date _____

1 What does the word **extinct** mean?

- A still living on earth
- B no longer living on earth
- C living on earth
- D only one living on earth



2 When a species is **extinct**, it means there are **not any living** _____ of that kind on earth.

- A males
- B females
- C species
- D young



3 Which is an example of an **extinct** animal?

4 **Dinosaurs** roamed the earth long ago. It is believed by scientists that the last of the dinosaurs **became extinct** about

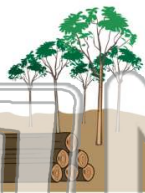


PREVIEW

Please [Sign In](#) or [Sign Up](#) to download the printable version of this worksheet

7 hunt an animal species too much and eventually that animal species _____.

- A cold temperature
- B hot temperature
- C drought
- D destruction of animals' habitat



- A has more offspring
- B dies out completely
- C moves away
- D stays in open spaces



9 **Many** animal species that once lived on earth are now **extinct**.

True or false?

- A true
- B false



10 An **endangered species** means _____

- A the species is close to becoming extinct
- B the species is gone but will return
- C the species is gone forever
- D the species is alive and well

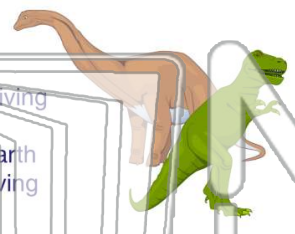




Name _____ Class _____ Date _____

1 What does the word **extinct** mean?

- A still living on earth
- B no longer living on earth
- C living on earth
- D only one living on earth



2 When a species is **extinct**, it means there are **not any living** _____ of that kind on earth.

- A males
- B females
- C species
- D young



3 Which is an example of an **extinct** animal?

4 **Dinosaurs** roamed the earth long ago. It is believed by scientists that the last of the dinosaurs **became extinct** about _____.

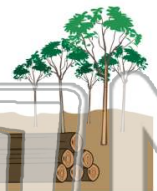


PREVIEW

Please [Sign In](#) or [Sign Up](#) to download the printable version of this worksheet

7

- A cold temperature
- B hot temperature
- C drought
- D destruction of animals' habitat



8 **hunt an animal species too much** and eventually that animal species _____.

- A has more offspring
- B dies out completely
- C moves away
- D stays in open spaces



9 **Many** animal species that once lived on earth are now **extinct**.

True or false?

- A true
- B false



10 An **endangered species** means _____.

- A the species is close to becoming extinct
- B the species is gone but will return
- C the species is gone forever
- D the species is alive and well

