



Name \_\_\_\_\_ Class \_\_\_\_\_ Date \_\_\_\_\_

1 The **human skeletal system** is made up of \_\_\_\_\_ that **support** your entire body.

- A bones
- B skin
- C muscles
- D ligaments



2 What is one important function the **skeletal system** performs for vital organs such as the **heart**?

- A helps the organs work
- B produces oxygen
- C provides protection
- D releases carbon dioxide



3 The human **skeletal system** is made up of \_\_\_\_\_ **bones**.



4 Your \_\_\_\_\_ is made up of **muscles** that are attached to your skeletal system. Your muscles **help you**.



5 **PREVIEW**  
Please [Sign In](#) or [Sign Up](#) to download the printable version of this worksheet

7 **skeleton move.**

- A skeletal
- B tiny
- C cardiac
- D respiratory



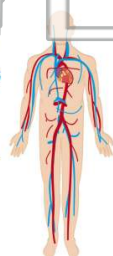
**heart, blood vessels, and blood?**

- A respiratory system
- B circulatory system
- C muscular system
- D nervous system



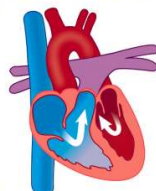
9 The main function of your **circulatory system** is to pump blood from the heart to **all parts** of your **body**. \_\_\_\_\_ carries important nutrients throughout your body and gets rid of waste.

- A Blood
- B Oxygen
- C Muscles
- D Bones



10 The **right side** of your heart collects blood **filled with carbon dioxide** from your body. This blood gets pumped to your \_\_\_\_\_, where the carbon dioxide is exhaled (breathed out) of your body.

- A brain
- B lungs
- C liver
- D mouth





Name \_\_\_\_\_ Class \_\_\_\_\_ Date \_\_\_\_\_

1 The **human skeletal system** is made up of \_\_\_\_\_ that **support** your entire body.

- A bones
- B skin
- C muscles
- D ligaments



2 What is one important function the **skeletal system** performs for vital organs such as the **heart**?

- A helps the organs work
- B produces oxygen
- C provides protection
- D releases carbon dioxide



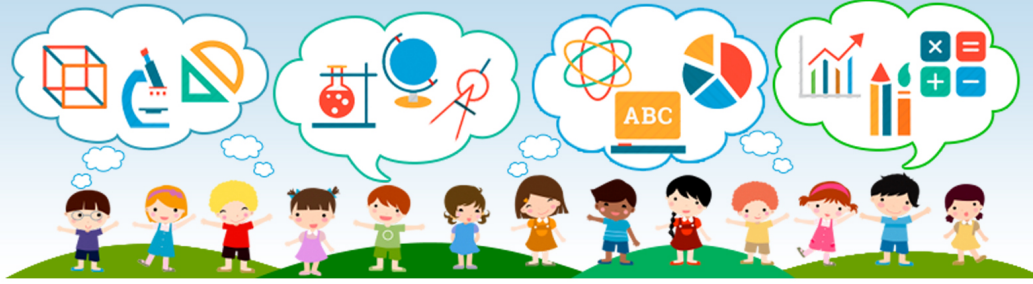
3 The human **skeletal system** is made up of \_\_\_\_\_ **bones**.



4 Your \_\_\_\_\_ is made up of **muscles** that are attached to your skeletal system. Your muscles **help you** \_\_\_\_\_.



5



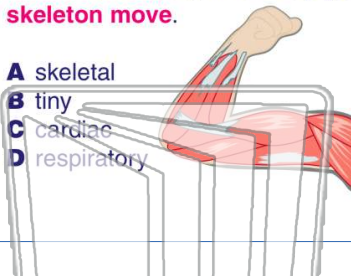
## PREVIEW

Please [Sign In](#) or [Sign Up](#) to download the printable version of this worksheet

7

**skeleton move.**

- A skeletal
- B tiny
- C cardiac
- D respiratory



**heart, blood vessels, and blood?**

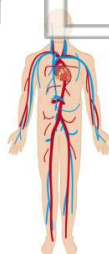
- A respiratory system
- B circulatory system
- C muscular system
- D nervous system



9

The main function of your **circulatory system** is to pump blood from the heart to **all parts** of your **body**. \_\_\_\_\_ carries important nutrients throughout your body and gets rid of waste.

- A Blood
- B Oxygen
- C Muscles
- D Bones



10

The **right side** of your heart collects blood **filled with carbon dioxide** from your body. This blood gets pumped to your \_\_\_\_\_, where the carbon dioxide is exhaled (breathed out) of your body.

- A brain
- B lungs
- C liver
- D mouth

