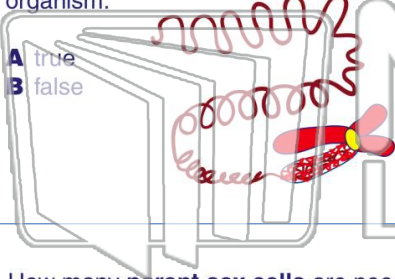




Name _____ Class _____ Date _____

1 A **chromosome** is condensed chromatin that holds the **genetic material** of an organism.



- A true
- B false

2 A **sex cell** carries _____ of the total number of chromosomes.

- A 25%
- B 50%
- C 75%
- D 100%

3 How many **parent sex cells** are needed to create a **fertilized cell**?

4 A **human cell** has a total of _____ **chromosomes**.

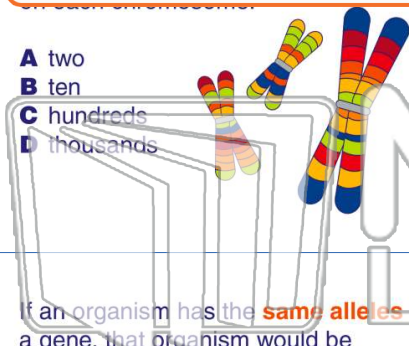


PREVIEW

Please [Sign In](#) or [Sign Up](#) to download the printable version of this worksheet

7 An organism has _____ chromosomes.

- A two
- B ten
- C hundreds
- D thousands



8 An organism has _____ chromosomes.

- A true
- B false



9 If an organism has the **same alleles** for a gene, that organism would be _____ for that gene.

- A dominant
- B recessive
- C homozygous
- D heterozygous



10 The **scientific study of heredity** is called _____.

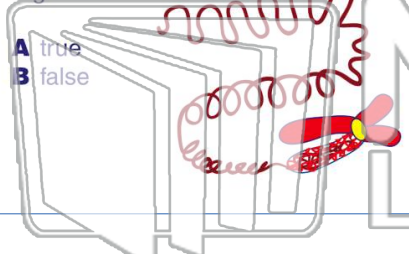
- A genetics
- B biology
- C ecology
- D psychology





Name _____ Class _____ Date _____

1 A **chromosome** is condensed chromatin that holds the **genetic material** of an organism.



- A true
- B false

2 A **sex cell** carries _____ of the total number of chromosomes.

- A 25%
- B 50%
- C 75%
- D 100%

3 How many **parent sex cells** are needed to create a **fertilized cell**?

4 A **human cell** has a total of _____ **chromosomes**.

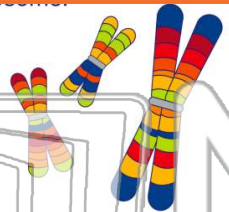


PREVIEW

Please [Sign In](#) or [Sign Up](#) to download the printable version of this worksheet

7 An organism has _____ chromosomes.

- A two
- B ten
- C hundreds
- D thousands



8 _____ is true.

- A true
- B false



9 If an organism has the **same alleles** for a gene, that organism would be _____ for that gene.

- A dominant
- B recessive
- C homozygous
- D heterozygous



10 The **scientific study of heredity** is called _____.

- A genetics
- B biology
- C ecology
- D psychology

