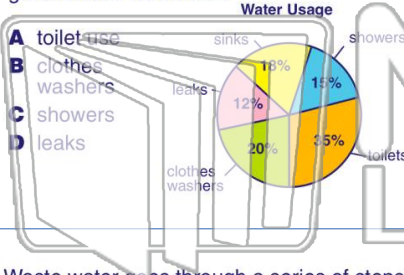




Name _____ Class _____ Date _____

1

Based on this graphic, which water usage represents the most **manageable waste** of groundwater resources?



- A toilet use
- B clothes washers
- C showers
- D leaks

2

The standard amount of water used to flush a toilet used to be **19** liters per flush (Lpf). Today, **low-flow** toilets use **6 Lpf**. If you used the toilet 10 times a day for 5 years, how much water would you **save** using a low-flow toilet?

- A 130 liters
- B 650 liters
- C 150,000 liters
- D 237,250 liters

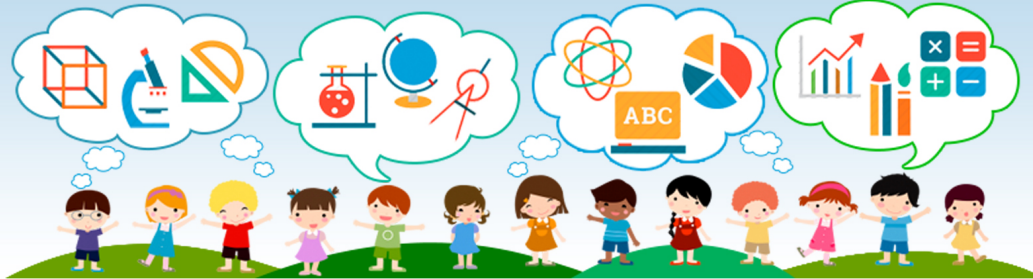
3

Waste water goes through a series of steps to purify it from physical, biological, and chemical waste. The part of the treatment process where **wastewater is aerated** (mixed with air)

4

Because it is so abundant, water is usually considered to be a renewable resource. Water can be **overused** to the point that it is a **nonrenewable resource**.

5

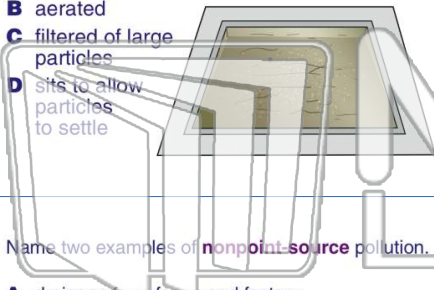


PREVIEW

Please [Sign In](#) or [Sign Up](#) to download the printable version of this worksheet

7

- A mixed with chlorine
- B aerated
- C filtered of large particles
- D sits to allow particles to settle



controlled by governmental laws and regulations and is rarely practiced in the United States.

This type of pollution is called _____.

- A point-source pollution
- B nonpoint-source pollution
- C petrochemical pollution
- D septic pollution



9

Name two examples of **nonpoint-source** pollution.

- A drainage from farms and factory waste pumped into a stream
- B a leaking gas tank and water runoff from paved streets
- C used motor oil poured into the woods and an oil tanker accident
- D fertilizers washed off of farmers' fields and salt washed off of roads after winter



10

It is possible to **overuse** a **water resource** to the point that it can actually **disappear**.

- A true
- B false

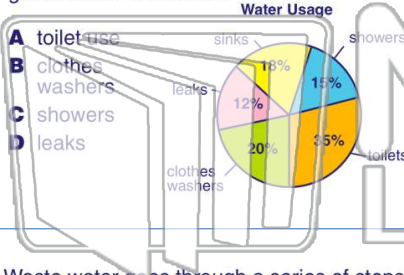




Name _____ Class _____ Date _____

1

Based on this graphic, which water usage represents the most **manageable waste** of groundwater resources?



- A toilet use
- B clothes washers
- C showers
- D leaks

2

The standard amount of water used to flush a toilet used to be **19** liters per flush (Lpf). Today, **low-flow** toilets use **6 Lpf**. If you used the toilet 10 times a day for 5 years, how much water would you **save** using a low-flow toilet?

- A 130 liters
- B 650 liters
- C 150,000 liters
- D 237,250 liters

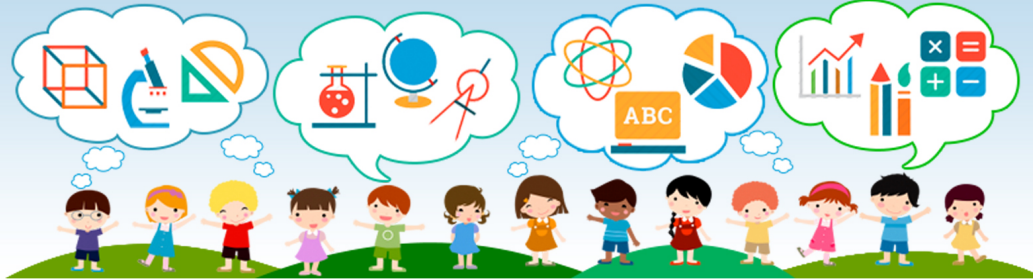
3

Waste water goes through a series of steps to purify it from physical, biological, and chemical waste. The part of the treatment process where **wastewater is aerated** (mixed with air)

4

Because it is so abundant, water is usually considered to be a renewable resource. Water can be **overused** to the point that it is a **nonrenewable resource**.

5

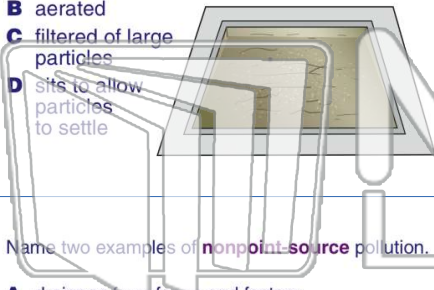


PREVIEW

Please [Sign In](#) or [Sign Up](#) to download the printable version of this worksheet

7

- A mixed with chlorine
- B aerated
- C filtered of large particles
- D sits to allow particles to settle



controlled by governmental laws and regulations and is rarely practiced in the United States. This type of pollution is called _____.

- A point-source pollution
- B nonpoint-source pollution
- C petrochemical pollution
- D septic pollution



9

Name two examples of **nonpoint-source** pollution.

- A drainage from farms and factory waste pumped into a stream
- B a leaking gas tank and water runoff from paved streets
- C used motor oil poured into the woods and an oil tanker accident
- D fertilizers washed off of farmers' fields and salt washed off of roads after winter



10

It is possible to **overuse** a water resource to the point that it can actually **disappear**.

- A true
- B false

