



Name \_\_\_\_\_ Class \_\_\_\_\_ Date \_\_\_\_\_

1 Which is **characteristic** of an **animal**?

- A heterotrophic
- B autotrophic
- C unicellular
- D prokaryotic

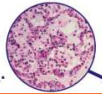


2 Animals are able to **move around their environment** and they **reproduce sexually**.

- A true
- B false



3 In animals, a **tissue** is made up of **similar cells** that \_\_\_\_\_.



4 \_\_\_\_\_ is a **group of tissues** that come together to perform a specific job that is more complex than each individual tissue can finish.



5

## PREVIEW

Please [Sign In](#) or [Sign Up](#) to download the printable version of this worksheet

7

A binary fission  
B conjugation  
C budding  
D sexually



- A human
- B hydra
- C sponge
- D fishes



9 Which is **not** a reason that scientists believe animals adapted to have the **ability to move**?

- A to reproduce
- B to gather food
- C to clean themselves
- D to escape predators



10 An animal does **not** need \_\_\_\_\_ from its environment.

- A carbon dioxide
- B oxygen
- C food
- D water





Name \_\_\_\_\_ Class \_\_\_\_\_ Date \_\_\_\_\_

1 Which is **characteristic** of an **animal**?

- A heterotrophic
- B autotrophic
- C unicellular
- D prokaryotic

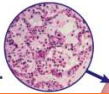


2 Animals are able to **move around their environment** and they **reproduce sexually**.

- A true
- B false



3 In animals, a **tissue** is made up of **similar cells** that \_\_\_\_\_.



4 \_\_\_\_\_ is a **group of tissues** that come together to perform a specific job that is more complex than each individual tissue can finish.



**PREVIEW**

Please [Sign In](#) or [Sign Up](#) to download the printable version of this worksheet

7

- A binary fission
- B conjugation
- C budding
- D sexually



8 An animal does **not** need \_\_\_\_\_ from its environment.

- A human
- B hydra
- C sponge
- D fishes



9 Which is **not** a reason that scientists believe animals adapted to have the **ability to move**?

- A to reproduce
- B to gather food
- C to clean themselves
- D to escape predators



10 An animal does **not** need \_\_\_\_\_ from its environment.

- A carbon dioxide
- B oxygen
- C food
- D water

