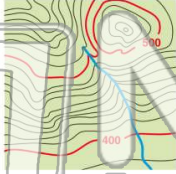




Name _____ Class _____ Date _____

1 When contour lines cross a **stream** or a **valley**, they _____.

- A intersect each other
- B are V-shaped, with the V pointing upstream
- C are V-shaped, with the V pointing downstream
- D are circular in shape



2 A map is a flat, two-dimensional picture of the spherical earth. When the oceans and landmasses are projected onto a cylinder of paper, a **Mercator projection** map like this is created. When mapped this way, landmasses are accurate near the equator, but distorted near the poles.

- A true
- B false



3 A **conic projection** map is created when a portion of the earth's surface is projected onto a cone of paper which is then unrolled into a flat piece of paper. The open end of the cone touches only **one line of**

4 An **azimuthal projection** is a map that is created when the surface of the globe is projected onto a **flat plane**. The plane touches the globe at a **single point** (usually the North or South Pole). These

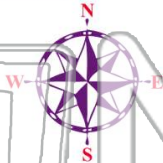


PREVIEW

Please [Sign In](#) or [Sign Up](#) to download the printable version of this worksheet

7 south, east, and west. **North, south, east** and **west** are called the _____.

- A major directions
- B prime meridians
- C cardinal directions
- D index contours



Using the map, what city is located near 40° N, 105° W?

- A Boston, Massachusetts
- B Chicago, Illinois
- C Seattle, Washington
- D Denver, Colorado



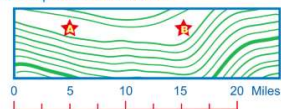
9 The imaginary lines on the globe that run through the North Pole and South Pole are called **lines of longitude**. They are also known by the name _____.

- A contours
- B meridians
- C equators
- D projections



10 The **scale** of a map shows the relationship of distances on the map with those on the earth's surface. For example, one inch on the map might equal one mile on the earth's surface. Each map has its own scale depending on the purpose and size of the map. Using this map and scale, what is the distance between points A and B?

- A 1 mile
- B 10 miles
- C 15 miles
- D 20 miles

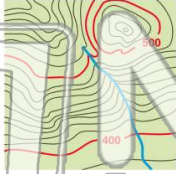




Name _____ Class _____ Date _____

1 When contour lines cross a **stream** or a **valley**, they _____.

- A intersect each other
- B are V-shaped, with the V pointing upstream
- C are V-shaped, with the V pointing downstream
- D are circular in shape



2 A map is a flat, two-dimensional picture of the spherical earth. When the oceans and landmasses are projected onto a cylinder of paper, a **Mercator projection** map like this is created. When mapped this way, landmasses are accurate near the equator, but distorted near the poles.

- A true
- B false



3 A **conic projection** map is created when a portion of the earth's surface is projected onto a cone of paper which is then unrolled into a flat piece of paper. The open end of the cone touches only **one line of**

4 An **azimuthal projection** is a map that is created when the surface of the globe is projected onto a **flat plane**. The plane touches the globe at a **single point** (usually the North or South Pole). These

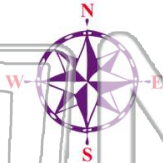


PREVIEW

Please [Sign In](#) or [Sign Up](#) to download the printable version of this worksheet

7 south, east, and west. **North, south, east and west** are called the _____.

- A major directions
- B prime meridians
- C cardinal directions
- D index contours



8 Using the map, what city is located near 40° N, 105° W?

- A Boston, Massachusetts
- B Chicago, Illinois
- C Seattle, Washington
- D Denver, Colorado



9 The imaginary lines on the globe that run through the North Pole and South Pole are called **lines of longitude**. They are also known by the name _____.

- A contours
- B meridians
- C equators
- D projections



10 The **scale** of a map shows the relationship of distances on the map with those on the earth's surface. For example, one inch on the map might equal one mile on the earth's surface. Each map has its own scale depending on the purpose and size of the map. Using this map and scale, what is the distance between points A and B?

- A 1 mile
- B 10 miles
- C 15 miles
- D 20 miles

