



Name \_\_\_\_\_ Class \_\_\_\_\_ Date \_\_\_\_\_

1 Scientists theorize that solar systems begin in the **dust and gas clouds** found in between the stars. The dust is composed of **elements** like iron and carbon. The **gas** is hydrogen and helium. Particles

start come together to form planets. **These dusty, gaseous clouds are called \_\_\_\_\_.**

- A planetesimals
- B nebulae
- C comets
- D quasars



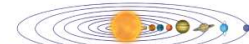
2 **Dust particles** in a nebula collide with each other and **stick together**. Then more dust sticks to these particles. Particles begin to stick to each other and the particles grow to pebbles and to rocks and to boulders. **These larger particles forming inside the nebula are called \_\_\_\_\_.**

- A planets
- B planetesimals
- C comets
- D cometesimals



3 Close to the sun, scientists believe the rocky planetesimals grew by accretion to become the rocky planets. In the outer reaches of the solar system, hydrogen and helium gases accreted (that

4 Which of the following is a correct list of planets in order starting with the one **nearest the Sun**?

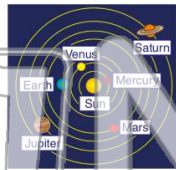


## PREVIEW

Please [Sign In](#) or [Sign Up](#) to download the printable version of this worksheet

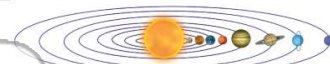
7 **What is the center of the universe and all the planets revolve around the sun.** Though his theory proved true, it took many years before the \_\_\_\_\_ concept of the universe was accepted.

- A heliocentric
- B geocentric
- C galactic
- D androcentric



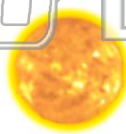
scientists state that this understanding is \_\_\_\_\_.

- A true
- B false



9 The **sun** is \_\_\_\_\_.

- A a star like others in the universe composed mostly of hydrogen and helium
- B a unique star in the Milky Way galaxy composed mostly of hydrogen and oxygen
- C a dwarf red star that is nearing the end of its life
- D a red giant star



10 The **outer atmosphere** of the sun extends for millions of miles beyond the sun. This atmosphere is composed of **gases** and can only be seen during a total solar eclipse. **The sun's outer atmosphere is called the \_\_\_\_\_.**

- A photosphere
- B chromosphere
- C convective zone
- D corona





Name \_\_\_\_\_ Class \_\_\_\_\_ Date \_\_\_\_\_

1

Scientists theorize that solar systems begin in the **dust and gas clouds** found in between the stars. The dust is composed of **elements** like iron and carbon. The **gas** is hydrogen and helium. Particles start come together to form planets. **These dusty, gaseous clouds are called \_\_\_\_\_.**

- A planetesimals
- B nebulae
- C comets
- D quasars



2

**Dust particles** in a nebula collide with each other and **stick together**. Then more dust sticks to these particles. Particles begin to stick to each other and the particles grow to pebbles and to rocks and to boulders. **These larger particles forming inside the nebula are called \_\_\_\_\_.**

- A planets
- B planetesimals
- C comets
- D cometesimals



3

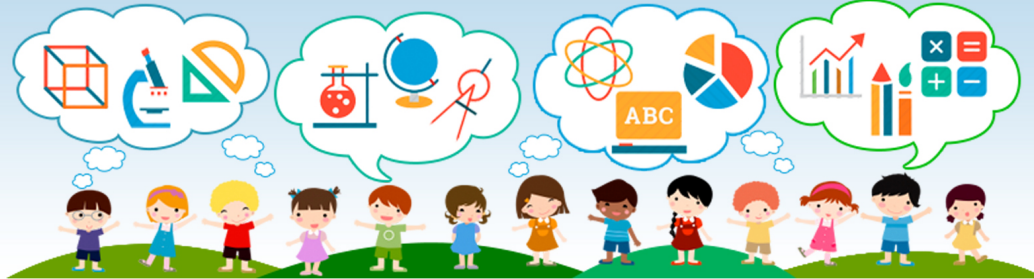
Close to the sun, scientists believe the rocky planetesimals grew by accretion to become the rocky planets. In the outer reaches of the solar system, hydrogen and helium gases accreted (that

4

Which of the following is a correct list of planets in order starting with the one **nearest the Sun**?



5



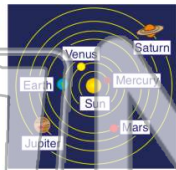
## PREVIEW

Please [Sign In](#) or [Sign Up](#) to download the printable version of this worksheet

7

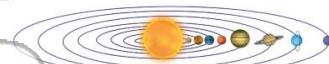
planets revolve around the sun. **Though his theory proved true, it took many years before the \_\_\_\_\_ concept of the universe was accepted.**

- A heliocentric
- B geocentric
- C galactic
- D androcentric



scientists state that this understanding is \_\_\_\_\_.

- A true
- B false



9

The **sun** is \_\_\_\_\_.

- A a star like others in the universe composed mostly of hydrogen and helium
- B a unique star in the Milky Way galaxy composed mostly of hydrogen and oxygen
- C a dwarf red star that is nearing the end of its life
- D a red giant star



10

The **outer atmosphere** of the sun extends for millions of miles beyond the sun. This atmosphere is composed of **gases** and can only be seen during a total solar eclipse. **The sun's outer atmosphere is called the \_\_\_\_\_.**

- A photosphere
- B chromosphere
- C convective zone
- D corona

