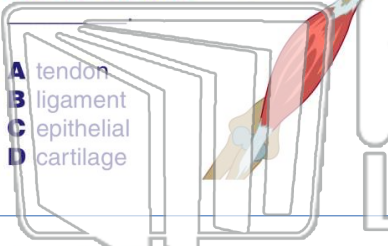




Name \_\_\_\_\_ Class \_\_\_\_\_ Date \_\_\_\_\_

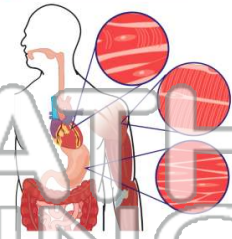
1 At the end of each muscle is a **strong connective tissue** that attaches your muscles to bones called a



- A tendon
- B ligament
- C epithelial
- D cartilage

2 **Smooth muscles** are \_\_\_\_\_.

- A striated
- B voluntary
- C immovable
- D involuntary



3 What **structure** is an example of a **cardiac muscle**?



4 How do muscles get back to their **original length**?

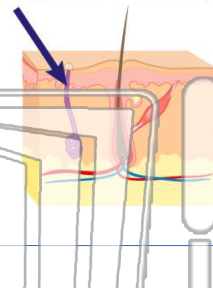


## PREVIEW

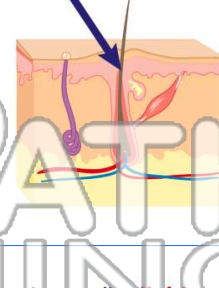
Please [Sign In](#) or [Sign Up](#) to download the printable version of this worksheet

7 \_\_\_\_\_

- A warm, warm
- B cool, cool
- C warm, cool
- D cool, warm



- A sweat
- B oil
- C hair
- D skin cells



9 **Acne** is \_\_\_\_\_

- A a disease of the skin
- B a bacterial infection of the skin
- C when cells divide uncontrollably
- D way of cleaning the skin



10 \_\_\_\_\_ is when cells **divide uncontrollably**.

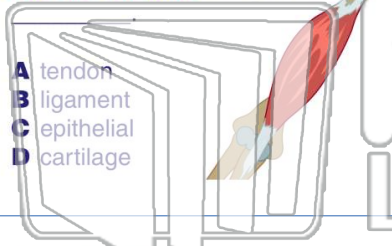
- A A bacterial infection
- B Cell disease
- C Cancer
- D Acne





Name \_\_\_\_\_ Class \_\_\_\_\_ Date \_\_\_\_\_

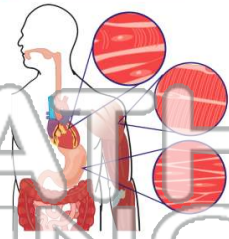
1 At the end of each muscle is a **strong connective tissue** that attaches your muscles to bones called a



- A tendon
- B ligament
- C epithelial
- D cartilage

2 **Smooth muscles** are \_\_\_\_\_.

- A striated
- B voluntary
- C immovable
- D involuntary



3 What **structure** is an example of a **cardiac muscle**?



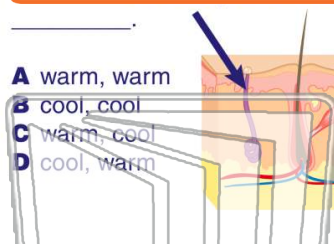
4 How do muscles get back to their **original length**?



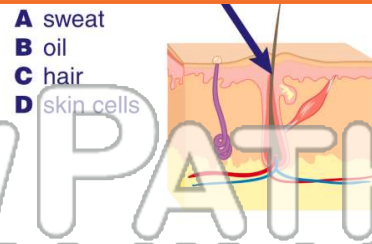
## PREVIEW

Please [Sign In](#) or [Sign Up](#) to download the printable version of this worksheet

7 \_\_\_\_\_



- A warm, warm
- B cool, cool
- C warm, cool
- D cool, warm



- A sweat
- B oil
- C hair
- D skin cells

9 **Acne** is \_\_\_\_\_

- A a disease of the skin
- B a bacterial infection of the skin
- C when cells divide uncontrollably
- D way of cleaning the skin



10 \_\_\_\_\_ is when cells **divide uncontrollably**.

- A A bacterial infection
- B Cell disease
- C Cancer
- D Acne

