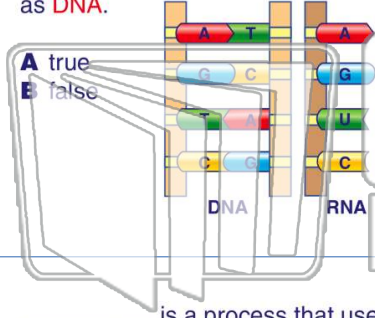




Name _____ Class _____ Date _____

1 RNA uses the **same** nitrogen bases as DNA.



2 A cloned animal is genetically identical to **one parent**.

A true
B false



3 _____ is a process that uses **genetic engineering** to correct some genetic disorders in humans.

4 What is a **mutation**?

A it is caused when toxic waste gets

5



PREVIEW

Please [Sign In](#) or [Sign Up](#) to download the printable version of this worksheet

7

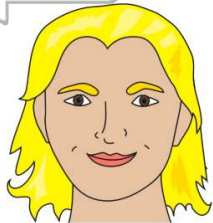
- A when an organism gets super powers
- B when an organism cannot function properly
- C an organism's color changes so it blends in with its environment better
- D an organism's color changes so it doesn't blend in with its environment

- A traits that are controlled by more than two alleles
- B traits that are controlled by two alleles
- C traits that are controlled by one allele
- D traits that are on many different genes

9

What **trait** is an example of **multiple alleles**?

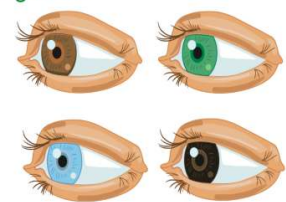
- A height
- B widow's peak
- C dimples
- D eye color



10

Can a **trait** be controlled by many **different genes**?

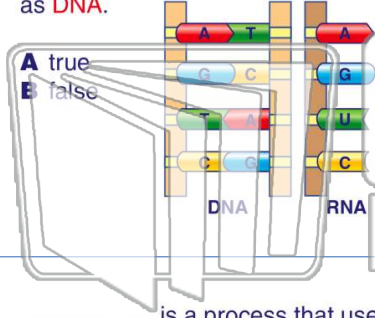
- A yes
- B no





Name _____ Class _____ Date _____

1 RNA uses the **same** nitrogen bases as DNA.



2 A cloned animal is genetically identical to **one parent**.

A true
B false



A

3 _____ is a process that uses **genetic engineering** to correct some genetic disorders in humans.

4 What is a **mutation**?

A it is caused when toxic waste gets

C

5



PREVIEW

Please [Sign In](#) or [Sign Up](#) to download the printable version of this worksheet

B

7

- A when an organism gets super powers
- B when an organism cannot function properly
- C an organism's color changes so it blends in with its environment better
- D an organism's color changes so it doesn't blend in with its environment

- A traits that are controlled by more than two alleles
- B traits that are controlled by two alleles
- C traits that are controlled by one allele
- D traits that are on many different genes

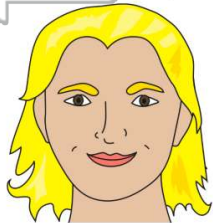
C

A

9

What **trait** is an example of **multiple alleles**?

- A height
- B widow's peak
- C dimples
- D eye color

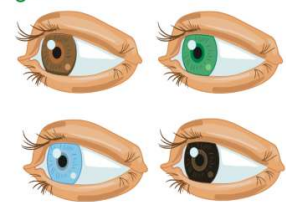


D

10

Can a **trait** be controlled by many **different genes**?

- A yes
- B no



A