



Name _____ Class _____ Date _____

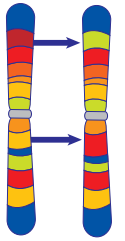
1 A _____ is **person** who has **one recessive allele** for a trait and **one dominant allele**.
Circle the answer.

- gene carrier
- defect protein

	G	G
G	GG	GG
g	Gg	Gg

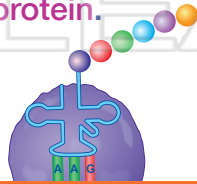
6 If there is a **mutation** on a **gene or chromosome** _____.

- a. it turns the organism into a entirely different species
- b. the wrong proteins are made
- c. better proteins are made



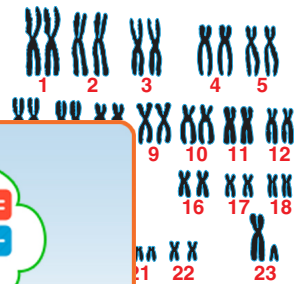
2 During _____, **mRNA** is **translated** to produce a very **specific protein**.
Circle the answer letter.

- a. cellular respiration
- b. protein synthesis



7 Which is an **example** of a **genetic disorder**?

- a. common cold
- b. AIDS



3 V



PREVIEW

Please [Sign In](#) or [Sign Up](#) to download the printable version of this worksheet

4 A g fa

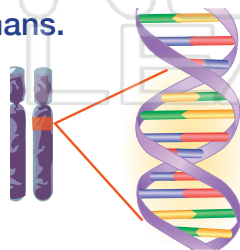
karyotype

Punnett square



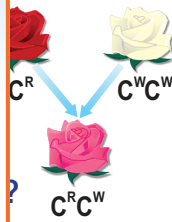
5 _____ is a **process** that uses genetic engineering to **correct some genetic disorders** in humans.

- a. Hybridization
- b. Cloning
- c. Gene therapy



10 **DNA fingerprinting** is used to _____.

- a. determine who touched something
- b. read the pattern of a person's DNA
- c. tally the nitrogen base pairs of a person's DNA



cloning





Modern Genetics - Answer Key

Name _____ Class _____ Date _____

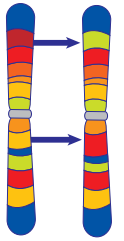
1 A _____ is **person** who has **one recessive allele** for a trait and **one dominant allele**. Circle the answer.

- gene
- defect
- carrier
- protein

	G	G
G	GG	GG
g	Gg	Gg

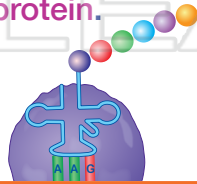
6 If there is a **mutation** on a **gene or chromosome** _____.

- a. it turns the organism into a entirely different species
- b. the wrong proteins are made
- c. better proteins are made



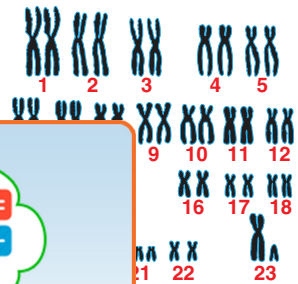
2 During _____, **mRNA** is **translated** to produce a very **specific protein**. Circle the answer letter.

- a. cellular respiration
- b. protein synthesis



7 Which is an **example** of a **genetic disorder**?

- a. common cold
- b. AIDS



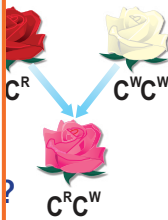
3 _____



4 _____

PREVIEW

Please [Sign In](#) or [Sign Up](#) to download the printable version of this worksheet



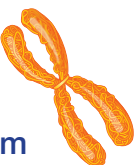
cloning

karyotype

Punnett square

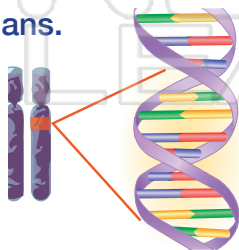


- a. a picture of the actual chromosomes of an organism
- b. a list of possible genetic disorders
- c. a type of genetic disorder



5 _____ is a **process** that uses genetic engineering to **correct some genetic disorders** in humans.

- a. Hybridization
- b. Cloning
- c. Gene therapy



10 **DNA fingerprinting** is used to _____.

- a. determine who touched something
- b. read the pattern of a person's DNA
- c. tally the nitrogen base pairs of a person's DNA