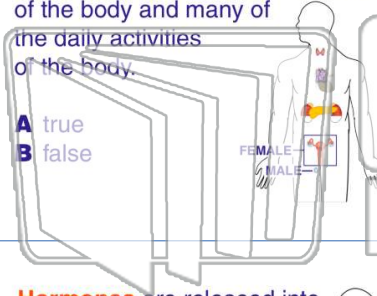




Name _____ Class _____ Date _____

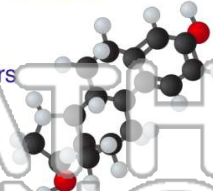
1 The **endocrine system** controls long-term and short-term changes of the body and many of the daily activities of the body.

- A true
- B false



2 The **chemicals** created by the **endocrine system** are called _____.

- A neurotransmitters
- B proteins
- C hormones
- D carbohydrates



3 **Hormones** are released into the bloodstream by _____ glands.



4 The **hormones** are in **control** of _____.

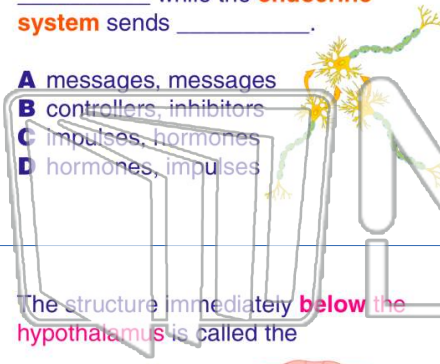


PREVIEW

Please [Sign In](#) or [Sign Up](#) to download the printable version of this worksheet

7 _____ **system** sends _____.

- A messages, messages
- B controllers, inhibitors
- C impulses, hormones
- D hormones, impulses



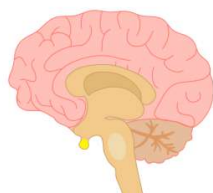
_____ of the hypothalamus?

- A It links the nervous system and the endocrine system together.
- B It secretes thalamus into the brain.
- C It links the digestive system and the endocrine system together.
- D It makes all of the hormones in the body.



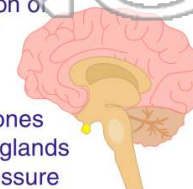
9 The structure immediately **below** the **hypothalamus** is called the _____.

- A kidney
- B pancreas
- C target cell
- D pituitary gland



10 Which is **not** a function of the **pituitary gland**?

- A regulate growth
- B release sex hormones
- C control endocrine glands
- D regulate blood pressure

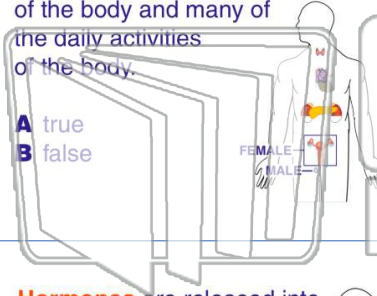




Name _____ Class _____ Date _____

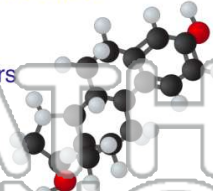
1 The **endocrine system** controls long-term and short-term changes of the body and many of the daily activities of the body.

- A true
- B false



2 The **chemicals** created by the **endocrine system** are called _____.

- A neurotransmitters
- B proteins
- C hormones
- D carbohydrates



3 **Hormones** are released into the bloodstream by _____ glands.



4 The **hormones** are in **control** of _____.

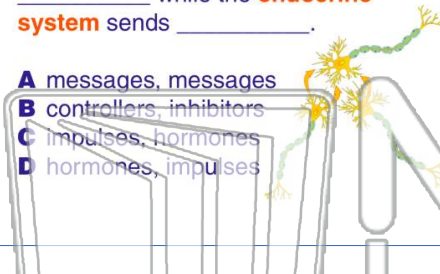


PREVIEW

Please [Sign In](#) or [Sign Up](#) to download the printable version of this worksheet

7 _____ **system** sends _____.

- A messages, messages
- B controllers, inhibitors
- C impulses, hormones
- D hormones, impulses



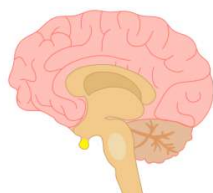
_____ of the hypothalamus?

- A It links the nervous system and the endocrine system together.
- B It secretes thalamus into the brain.
- C It links the digestive system and the endocrine system together.
- D It makes all of the hormones in the body.



9 The structure immediately **below** the **hypothalamus** is called the _____.

- A kidney
- B pancreas
- C target cell
- D pituitary gland



10 Which is **not** a function of the **pituitary gland**?

- A regulate growth
- B release sex hormones
- C control endocrine glands
- D regulate blood pressure

