



Name \_\_\_\_\_ Class \_\_\_\_\_ Date \_\_\_\_\_

1 A **plant** called \_\_\_\_\_ provided the pioneers with **linen** for clothing.

- A corn
- B beans
- C flax
- D squash

2 Pioneers **spun wool** taken from \_\_\_\_\_ into thread to make cloth.

- A sheep
- B deer
- C cows
- D bulls



# NEW PATH LEARNING

3 Pioneer settlements often grew up near rivers, lakes, or



4 Rivers, lakes, and streams provided \_\_\_\_\_ for **drinking**.



## PREVIEW

Please [Sign In](#) or [Sign Up](#) to download the printable version of this worksheet

7 \_\_\_\_\_

- A miles
- B mills
- C males
- D mules



- A oceans
- B forests
- C waterfalls
- D valleys

# NEW PATH LEARNING

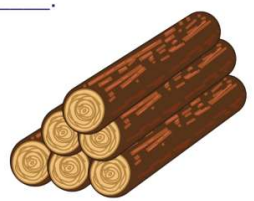
9 A **mill that grinds grain into flour** is called a \_\_\_\_\_.

- A sawmill
- B millstone
- C miller
- D gristmill



10 A **mill that cuts trees into lumber** is called a \_\_\_\_\_.

- A sawmill
- B gristmill
- C miller
- D millstone

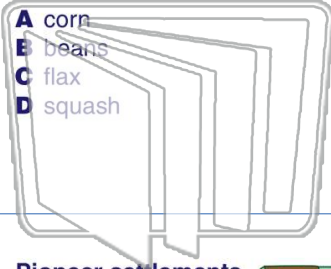




Name \_\_\_\_\_ Class \_\_\_\_\_ Date \_\_\_\_\_

1 A **plant** called \_\_\_\_\_ provided the pioneers with **linen** for clothing.

- A corn
- B beans
- C flax
- D squash



2 Pioneers **spun wool** taken from \_\_\_\_\_ into thread to make cloth.

- A sheep
- B deer
- C cows
- D bulls



# NEW PATH LEARNING

3 Pioneer settlements often grew up near rivers, lakes, or



4 Rivers, lakes, and streams provided \_\_\_\_\_ for **drinking**.

5



## PREVIEW

Please [Sign In](#) or [Sign Up](#) to download the printable version of this worksheet

7

- A miles
- B mills
- C males
- D miles



- A oceans
- B forests
- C waterfalls
- D valleys

9 A **mill that grinds grain into flour** is called a \_\_\_\_\_.

- A sawmill
- B millstone
- C miller
- D gristmill



10 A **mill that cuts trees into lumber** is called a \_\_\_\_\_.

- A sawmill
- B gristmill
- C miller
- D millstone

