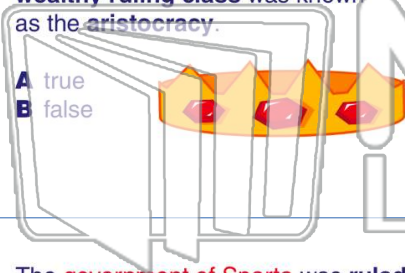




Name \_\_\_\_\_ Class \_\_\_\_\_ Date \_\_\_\_\_

1 In many city-states, rich men shared power with the king. This **wealthy ruling class** was known as the **aristocracy**.

- A true
- B false



2 In what way were **boys raised in Sparta** expected to serve their city-state?

- A military service
- B farming
- C priesthood
- D merchant services



3 The **government of Sparta** was ruled by a **small group**. Only this group could decide new laws. This type of

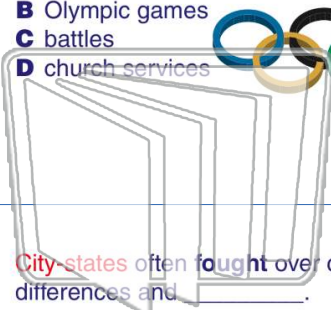
4 Athens is often thought to be the birthplace of **democracy**, or \_\_\_\_\_.



## PREVIEW

Please [Sign In](#) or [Sign Up](#) to download the printable version of this worksheet

7 **A** plays  
**B** Olympic games  
**C** battles  
**D** church services

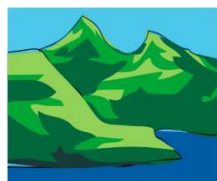


- A true
- B false



9 **City-states** often fought over cultural differences and \_\_\_\_\_.

- A land
- B language
- C food
- D Olympic events



10 In 540 B.C., the **Persian Army** began to **invade Greece**, and the city-states formed an **alliance**.

- A true
- B false






Name \_\_\_\_\_ Class \_\_\_\_\_ Date \_\_\_\_\_

1 In many city-states, rich men shared power with the king. This **wealthy ruling class** was known as the **aristocracy**.

A true  
B false



2 In what way were **boys raised in Sparta** expected to serve their city-state?

A military service  
B farming  
C priesthood  
D merchant services



3 The **government of Sparta** was ruled by a **small group**. Only this group could decide new laws. This type of

4 Athens is often thought to be the birthplace of **democracy**, or \_\_\_\_\_.

5



**PREVIEW**

Please [Sign In](#) or [Sign Up](#) to download the printable version of this worksheet

7

A plays  
B Olympic games  
C battles  
D church services



8

A true  
B false



9 **City-states** often fought over cultural differences and \_\_\_\_\_.

A land  
B language  
C food  
D Olympic events



10 In 540 B.C., the **Persian Army** began to **invade Greece**, and the city-states formed an **alliance**.

A true  
B false

