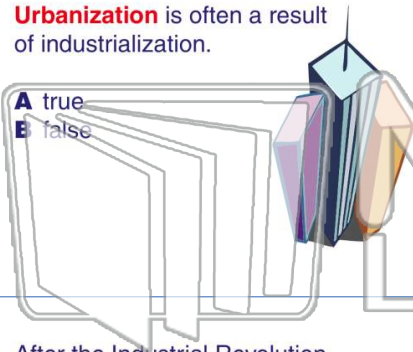




Name \_\_\_\_\_ Class \_\_\_\_\_ Date \_\_\_\_\_

1 **Urbanization** is often a result of industrialization.

- A true
- B false



2 After the **Industrial Revolution**, many countries used Great **Britain** as a **model** for their own industrialization.

- A true
- B false



3 After the Industrial Revolution, **populations in rural communities** \_\_\_\_\_.



4 **Industrialization** often leaves \_\_\_\_\_ **unemployed**.



## PREVIEW

Please [Sign In](#) or [Sign Up](#) to download the printable version of this worksheet

7 \_\_\_\_\_ in the 1800's?

- A technology
- B disease
- C better housing
- D automobiles



- A the American Federation of Labor
- B the Workers Union
- C the Federal Workers Party
- D the Industry Party

9 **Great Britain** expanded its number of \_\_\_\_\_ in order to sell their goods.

- A labor unions
- B colonies
- C geographical borders
- D debts



10 In about what year did the **US** start to industrialize?

- A 1750
- B 1810
- C 1850
- D 1950

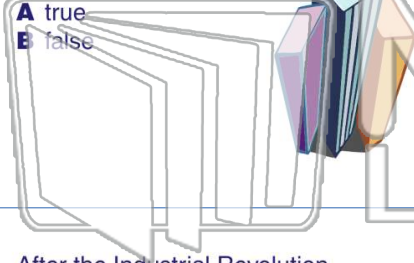




Name \_\_\_\_\_ Class \_\_\_\_\_ Date \_\_\_\_\_

1 **Urbanization** is often a result of industrialization.

- A true
- B false



2 After the **Industrial Revolution**, many countries used Great **Britain** as a **model** for their own industrialization.

- A true
- B false



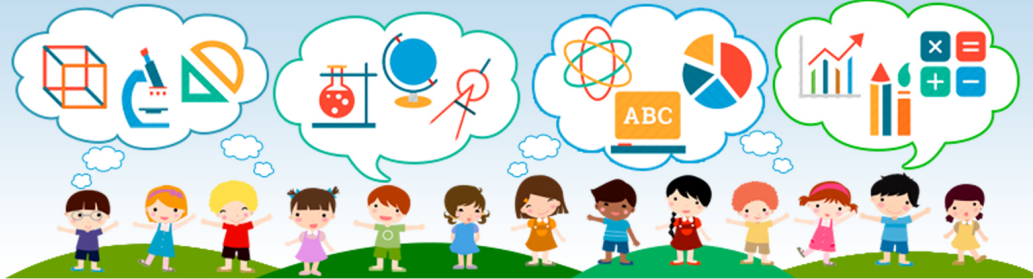
3 After the Industrial Revolution, **populations in rural communities** \_\_\_\_\_.



4 **Industrialization** often leaves \_\_\_\_\_ **unemployed**.



5



## PREVIEW

Please [Sign In](#) or [Sign Up](#) to download the printable version of this worksheet

7

\_\_\_\_\_ in the 1800's?

- A technology
- B disease
- C better housing
- D automobiles



- A the American Federation of Labor
- B the Workers Union
- C the Federal Workers Party
- D the Industry Party

9

**Great Britain** expanded its number of \_\_\_\_\_ in order to sell their goods.

- A labor unions
- B colonies
- C geographical borders
- D debts



10

In about what year did the **US** start to industrialize?

- A 1750
- B 1810
- C 1850
- D 1950

