



Name \_\_\_\_\_ Class \_\_\_\_\_ Date \_\_\_\_\_

- 1 What was the **main goal** of the TVA?
- A to organize farmers into a military group
  - B to help the urban middle class form a labor union
  - C to modernize the economy and society around the Tennessee River
  - D to help African Americans move north during the Great Depression

- 2 **When** was the TVA formed?
- A 1936
  - B 1933
  - C 1929
  - D 1932



- 3 The TVA was a **part** of the \_\_\_\_\_.
- A 16th Amendment

- 4 How many **states** are included in the TVA?



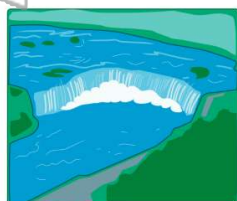
## PREVIEW

Please [Sign In](#) or [Sign Up](#) to download the printable version of this worksheet

- 7 \_\_\_\_\_
- A creating their own state
  - B providing electricity
  - C teaching crop rotation
  - D developing the economy

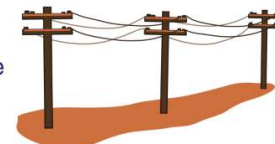
- \_\_\_\_\_
- A Dean Russell
  - B David Lilienthal
  - C Nathan Ashwander
  - D Herbert Hoover

- 9 **Hydroelectricity** is powered by \_\_\_\_\_
- A batteries
  - B coal
  - C water
  - D gas



- 10 In the early 1930's, the TVA **supplied** \_\_\_\_\_ to citizens.

- A public transportation
- B electricity
- C food
- D health care





Name \_\_\_\_\_ Class \_\_\_\_\_ Date \_\_\_\_\_

- 1 What was the **main goal** of the TVA?
- A to organize farmers into a military group
  - B to help the urban middle class form a labor union
  - C to modernize the economy and society around the Tennessee River
  - D to help African Americans move north during the Great Depression

- 2 **When** was the TVA formed?
- A 1936
  - B 1933
  - C 1929
  - D 1932



- 3 The TVA was a **part** of the \_\_\_\_\_.
- A 16th Amendment

- 4 How many **states** are included in the TVA?



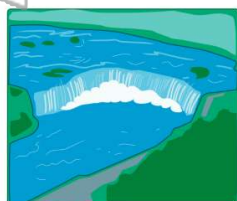
**PREVIEW**

Please [Sign In](#) or [Sign Up](#) to download the printable version of this worksheet

- 7 \_\_\_\_\_
- A creating their own state
  - B providing electricity
  - C teaching crop rotation
  - D developing the economy

- \_\_\_\_\_
- A Dean Russell
  - B David Lilienthal
  - C Nathan Ashwander
  - D Herbert Hoover

- 9 **Hydroelectricity** is powered by \_\_\_\_\_.
- A batteries
  - B coal
  - C water
  - D gas



- 10 In the early 1930's, the TVA **supplied** \_\_\_\_\_ to citizens.

- A public transportation
- B electricity
- C food
- D health care

