



Name \_\_\_\_\_ Class \_\_\_\_\_ Date \_\_\_\_\_

1 The issue of **global warming** has been **controversial** in the political arena; not everyone agrees that this environmental change is normal.

True or false?

- A true
- B false



2 The main **cause** of the **greenhouse effect** is **increased levels of** \_\_\_\_\_.

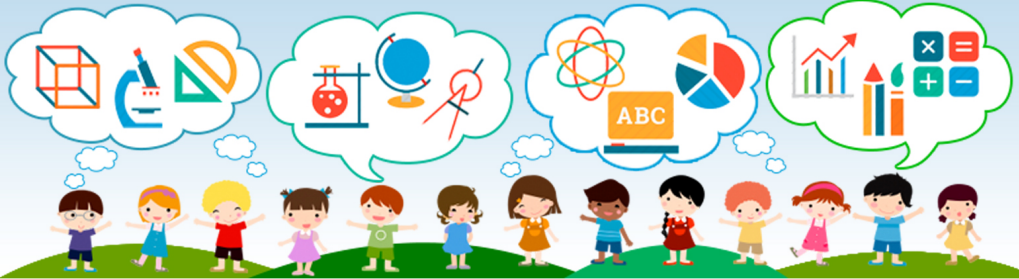
- A water vapor
- B acid rain
- C carbon dioxide
- D deforestation



3 The use of CFC's has contributed to the **depletion of ozone** in the Earth's atmosphere and the formation of the **greenhouse effect**.

4 Many **fossil fuels** are considered a natural, or **nonrenewable resource**.

True or false?



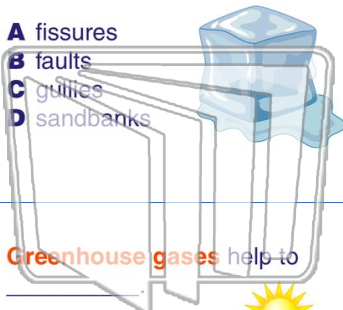
5

## PREVIEW

Please [Sign In](#) or [Sign Up](#) to download the printable version of this worksheet

7 repeated melting and cooling of water.

- A fissures
- B faults
- C gullies
- D sandbanks



Overproduction of greenhouse gases is detrimental to Earth, so governments are beginning to work together to **decrease** greenhouse gas production.

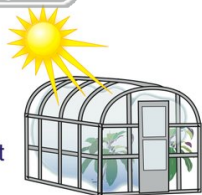
True or false?

- A true
- B false



9 **Greenhouse gases** help to \_\_\_\_\_.

- A spin
- B move
- C keep the cool
- D keep the sun's heat near the Earth



10 **Glacial erosion** occurs in two ways, **abrasion** and \_\_\_\_\_.

- A screeing
- B transferring
- C sedimenting
- D plucking





Name \_\_\_\_\_ Class \_\_\_\_\_ Date \_\_\_\_\_

1 The issue of **global warming** has been **controversial** in the political arena; not everyone agrees that this environmental change is normal.

True or false?

- A true
- B false



2 The main **cause** of the **greenhouse effect** is **increased levels of** \_\_\_\_\_.

- A water vapor
- B acid rain
- C carbon dioxide
- D deforestation



3 The use of CFC's has contributed to the **depletion of ozone** in the Earth's atmosphere and the formation of the **greenhouse effect**.

4 Many **fossil fuels** are considered a natural, or **nonrenewable resource**.

True or false?

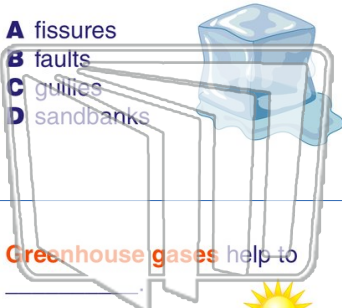


## PREVIEW

Please [Sign In](#) or [Sign Up](#) to download the printable version of this worksheet

repeated melting and cooling of water.

- A fissures
- B faults
- C gullies
- D sandbanks



Overproduction of greenhouse gases is detrimental to Earth, so governments are beginning to work together to **decrease** greenhouse gas production.

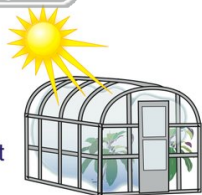
True or false?

- A true
- B false



9 **Greenhouse gases** help to \_\_\_\_\_.

- A spin
- B move
- C keep the cool
- D keep the sun's heat near the Earth



10 **Glacial erosion** occurs in two ways, **abrasion** and \_\_\_\_\_.

- A screening
- B transferring
- C sedimenting
- D plucking

