



Name _____ Class _____ Date _____

1 In **2005**, Hurricane _____ devastated **New Orleans** as well as other regions of the Gulf Coast.

- A Camille
- B Ivan
- C Katrina
- D Juan



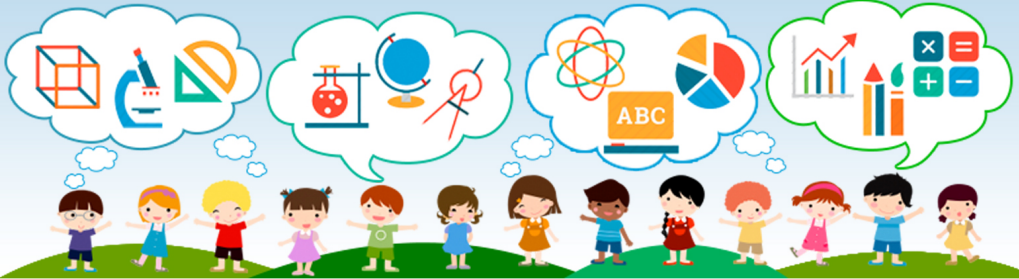
2 The **2004 World Series** winners, the Boston Red Sox, had not won a World Series in **how many years prior** to this victory?

- A 10
- B 86
- C 100
- D 62



3 At the turn of the twenty-first century, **Europe's official currency** changed over to the _____.

4 Who ran against George W. Bush in the **2000 presidential election**?



5

PREVIEW

Please [Sign In](#) or [Sign Up](#) to download the printable version of this worksheet

7 committing war crimes in the twenty-first century?

- A Svezozar Marovic
- B Marshal Tito
- C Slobodan Milosevic
- D Vladimir Putin



8 vote count in the **2000 presidential election**?

- A the Cabinet
- B the Supreme Court
- C the Federal Court
- D Congress



9 On September 15, _____, President Bush declared a **War on Terror**.

- A 2000
- B 2001
- C 2002
- D 2003



10 Who is identified as the **leader of al-Qaeda** and was named responsible for September 11 by the FBI?

- A Sadaam Hussein
- B Osama Bin Laden
- C Abu Sayyaf
- D Fidel Castro





Name _____ Class _____ Date _____

1 In **2005**, Hurricane _____ devastated **New Orleans** as well as other regions of the Gulf Coast.

- A Camille
- B Ivan
- C Katrina
- D Juan



2 The **2004 World Series** winners, the Boston Red Sox, had not won a World Series in **how many years prior** to this victory?

- A 10
- B 86
- C 100
- D 62



3 At the turn of the twenty-first century, **Europe's official currency** changed over to the _____.

4 Who ran against George W. Bush in the **2000 presidential election**?

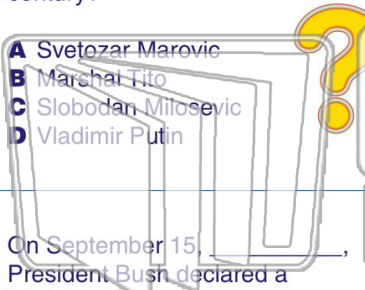


PREVIEW

Please [Sign In](#) or [Sign Up](#) to download the printable version of this worksheet

7 _____ committing war crimes in the twenty-first century?

- A Sveztozar Marovic
- B Marshal Tito
- C Slobodan Milosevic
- D Vladimir Putin



8 _____ vote count in the **2000 presidential election**?

- A the Cabinet
- B the Supreme Court
- C the Federal Court
- D Congress



9 On September 15, _____, President Bush declared a **War on Terror**.

- A 2000
- B 2001
- C 2002
- D 2003



10 Who is identified as the **leader of al-Qaeda** and was named responsible for September 11 by the FBI?

- A Sadaam Hussein
- B Osama Bin Laden
- C Abu Sayyaf
- D Fidel Castro

